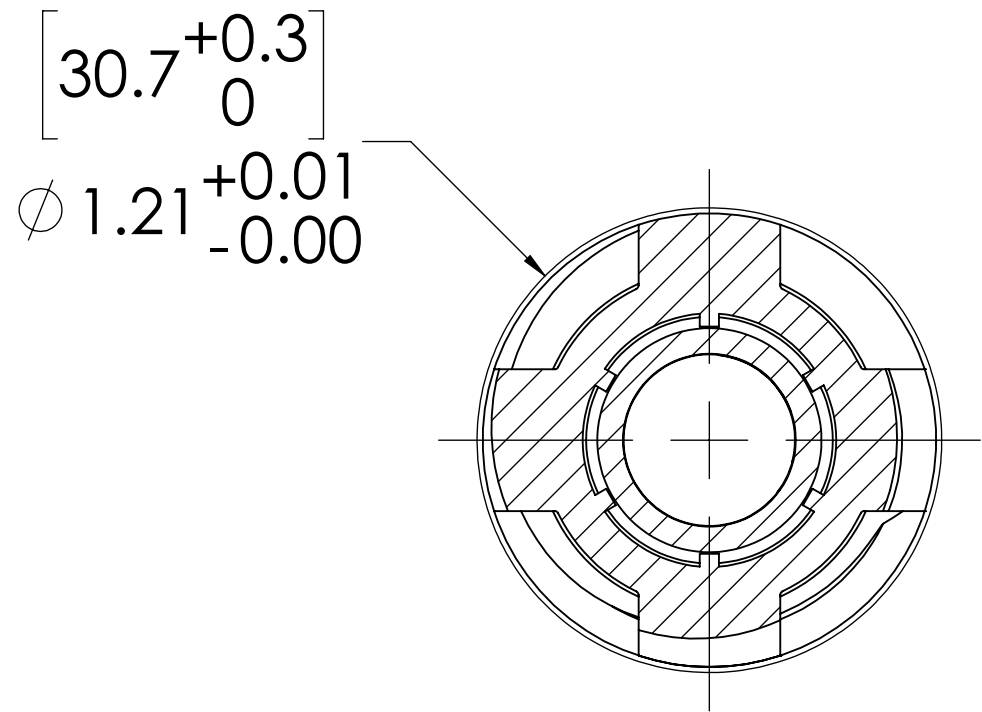
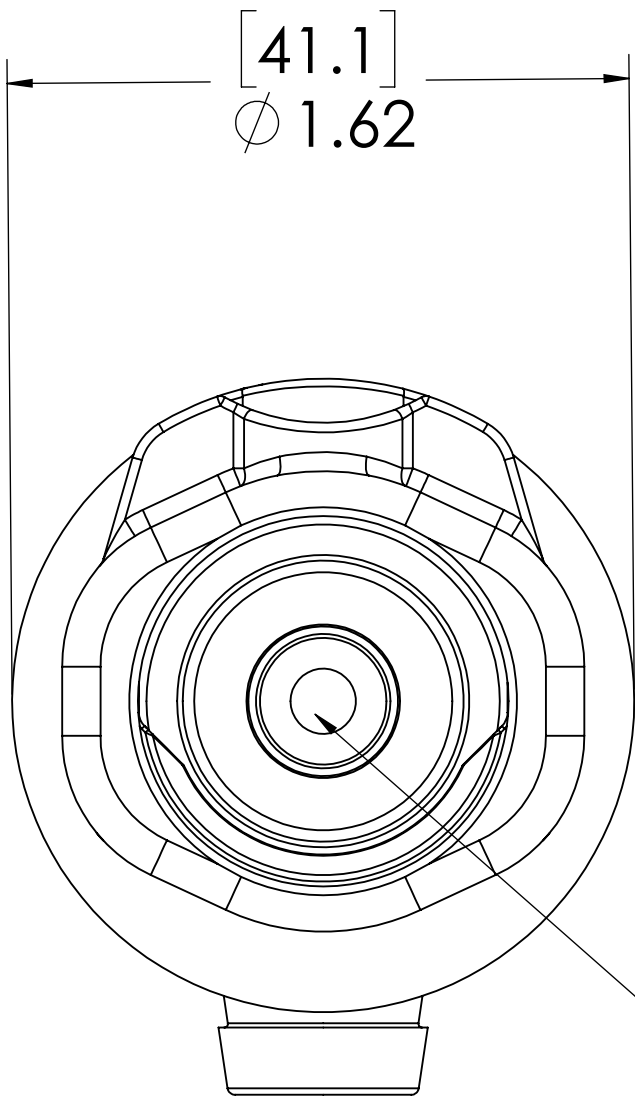
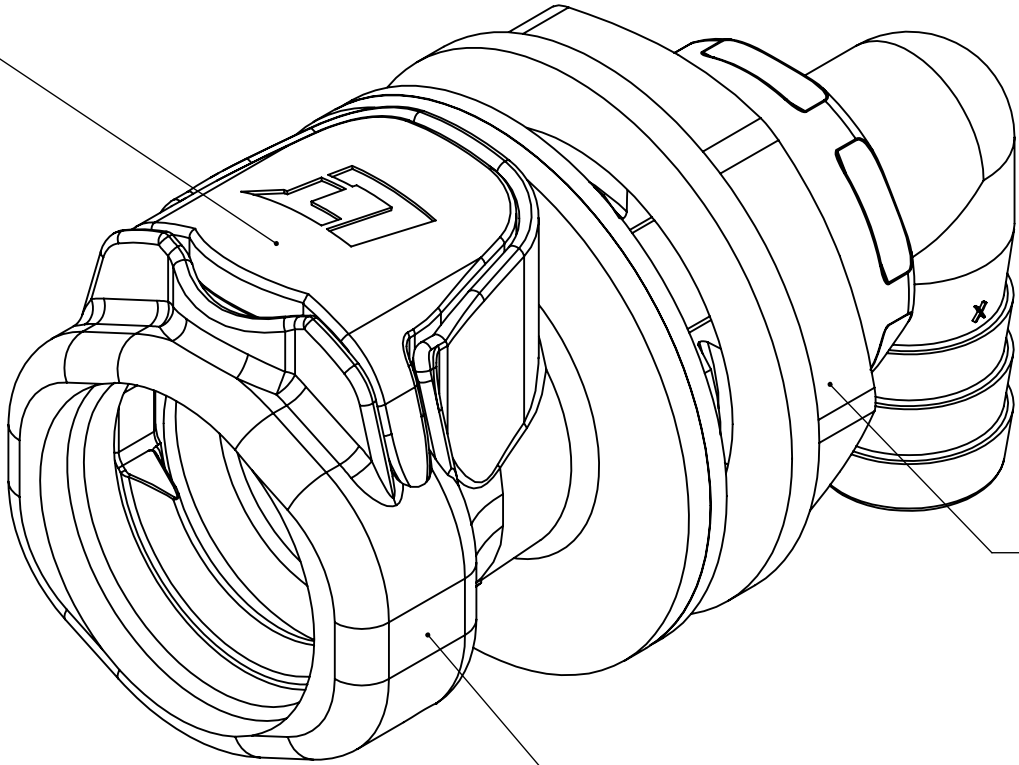


REVISIONS						
SHEET	ZONE	REV.	ECO	DESCRIPTION	DATE	APPROVED
ALL	ALL	NC	50108	INITIAL RELEASE	9/9/2014	HRC
ALL	ALL	A	50311	UPDATE DWG FORMAT TO STANDARDS	1/17/2020	CKE



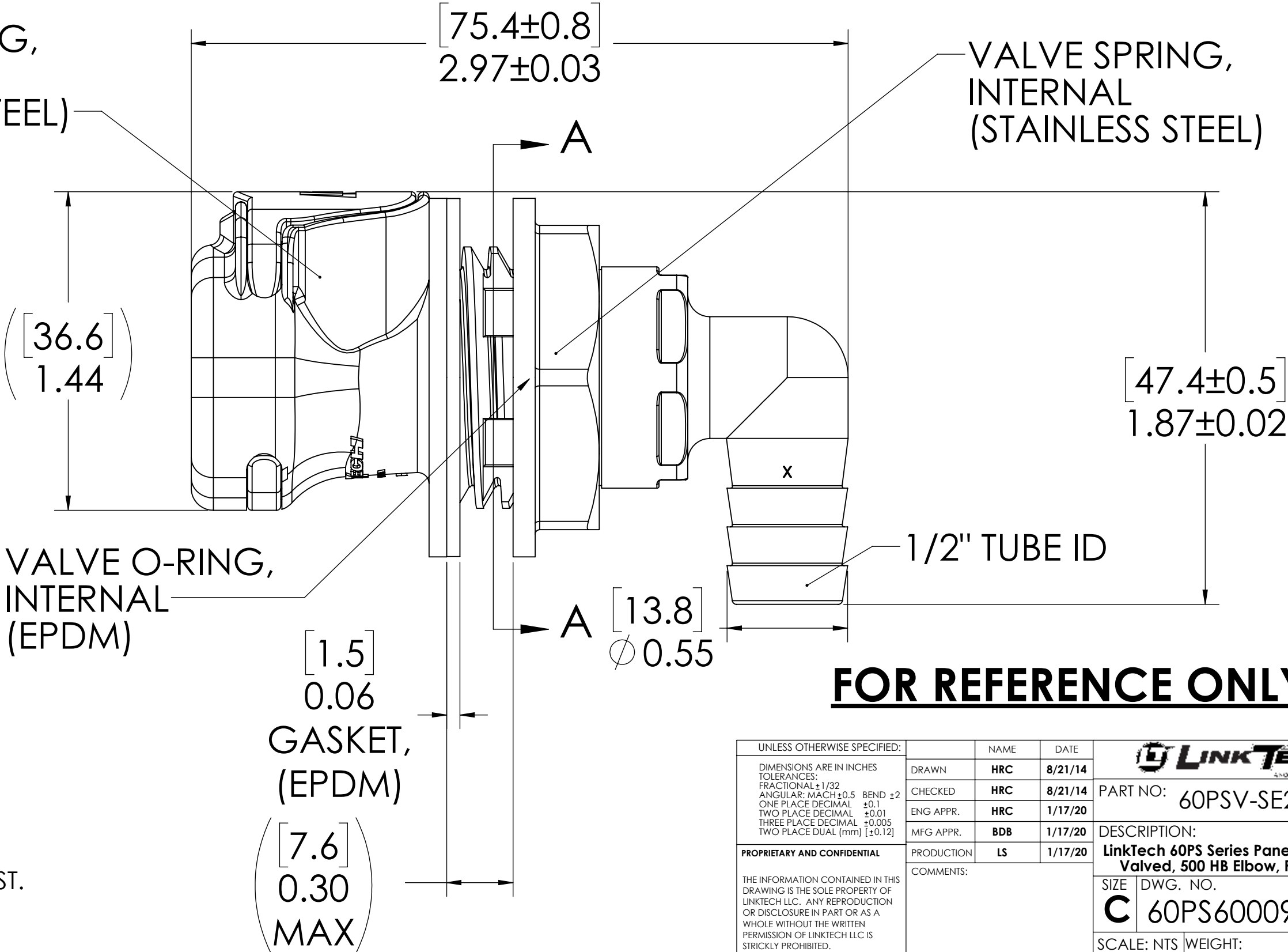
PANEL OPENING
(SECTION A-A)

LATCH,
(POLYSULFONE)



VALVE,
(POLYSULFONE)

LATCH SPRING,
INTERNAL
(STAINLESS STEEL)



VALVE O-RING,
INTERNAL
(EPDM)


GASKET,
(EPDM)

VALVE SPRING,
INTERNAL
(STAINLESS STEEL)

NOTES:

- MATERIAL: POLYSULFONE
- COLOR: WHITE
- O-RING MATERIAL: PEROXIDE CURED EPDM
- O-RINGS LUBRICATED WITH FOOD GRADE SILICONE OIL, 350 CST.

FOR REFERENCE ONLY

UNLESS OTHERWISE SPECIFIED:		NAME	DATE								
DIMENSIONS ARE IN INCHES TOLERANCES: FRACTIONAL ±1/32 ANGULAR: MACH ±0.5 BEND ±2 ONE PLACE DECIMAL ±0.1 TWO PLACE DECIMAL ±0.01 THREE PLACE DECIMAL ±0.005 TWO PLACE DUAL (mm) [±0.12]	DRAWN	HRC	8/21/14	PART NO: 60PSV-SE22-08							
	CHECKED	HRC	8/21/14								
	ENG APPR.	HRC	1/17/20	DESCRIPTION: LinkTech 60PS Series Panel Mt. Female, Valved, 500 HB Elbow, Polysulfone							
	MFG APPR.	BDB	1/17/20								
	PROPRIETARY AND CONFIDENTIAL						THE INFORMATION CONTAINED IN THIS DRAWING IS THE SOLE PROPERTY OF LINKTECH LLC. ANY REPRODUCTION OR DISCLOSURE IN PART OR AS A WHOLE WITHOUT THE WRITTEN PERMISSION OF LINKTECH LLC IS STRICTLY PROHIBITED.				
PRODUCTION			LS 1/17/20								
COMMENTS:											
SIZE				DWG. NO.		REV					
C				60PS600092		A					
SCALE: NTS				WEIGHT:		SHEET 1 OF 1					