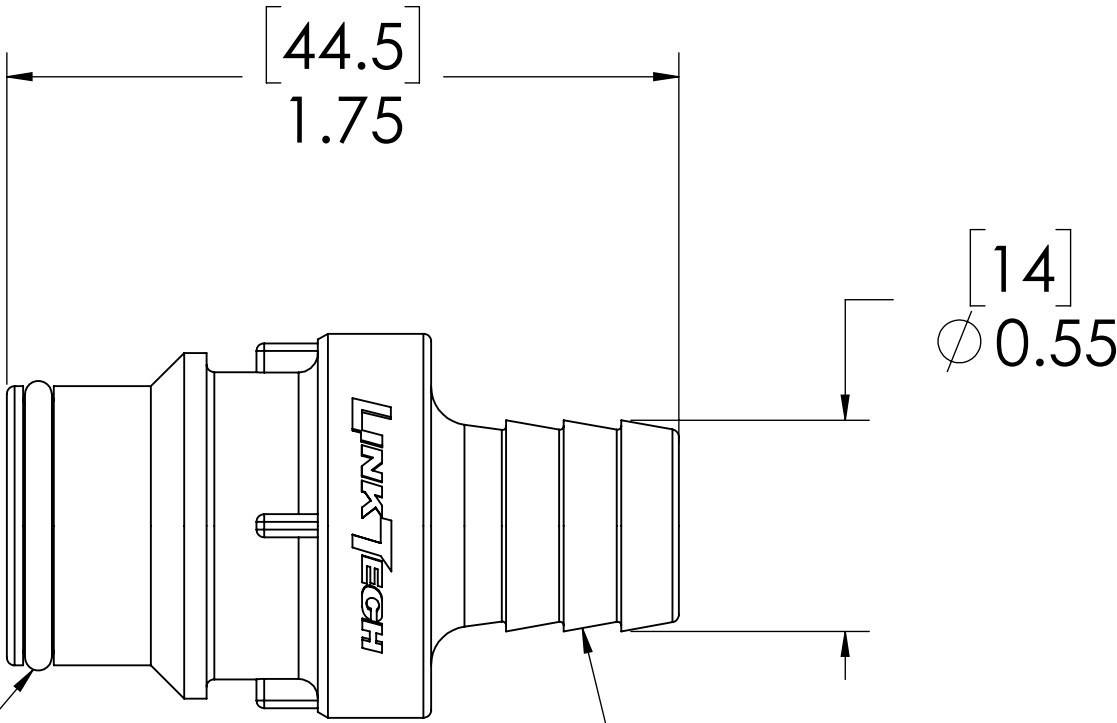
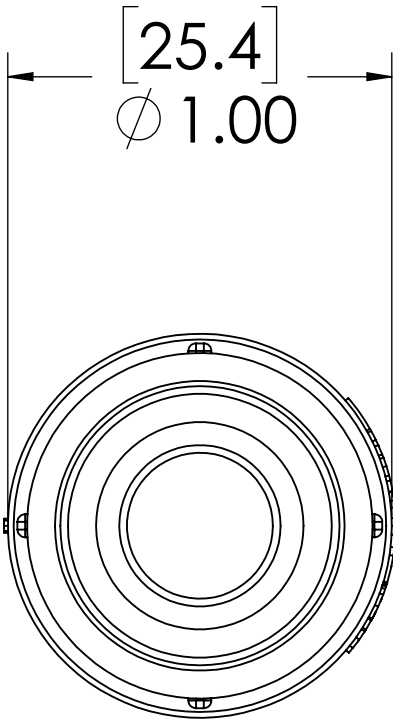
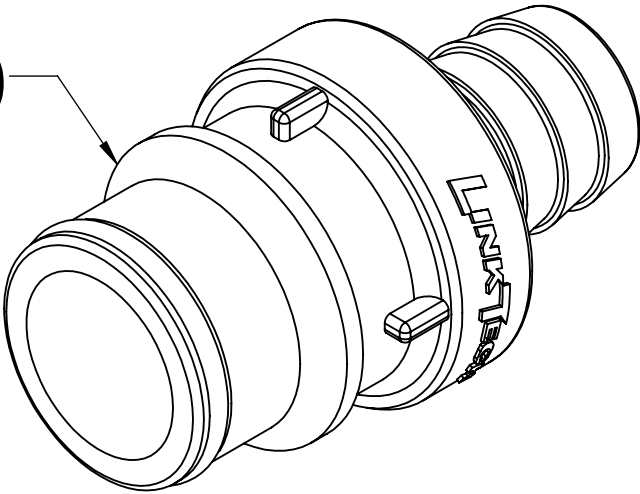


REVISIONS						
SHEET	ZONE	REV.	ECO	DESCRIPTION	DATE	APPROVED
1	ALL	A	50253	FROMAT UPDATE	2/6/2018	HRC

PLUG,  
(GLASS FILLED  
POLYPROPYLENE)




O-RING,  
(EPDM)

1/2" TUBE ID

- NOTES:**
- MATERIAL: GLASS FILLED POLYPROPYLENE
  - COLOR: WHITE
  - O-RING MATERIAL: EPDM, NSF61
  - O-RINGS LUBRICATED WITH FOOD GRADE SILICONE OIL, 350 CST.

**FOR REFERENCE ONLY**

UNLESS OTHERWISE SPECIFIED:		NAME	DATE	 PART NO: 65GP-PF2-08 DESCRIPTION: LinkTech 65GP Series Straight Male, Non-valved, 500 HB, Glass Filled Polypropylene SIZE DWG. NO. REV C 65GP600020 A SCALE: NTS WEIGHT: SHEET 1 OF 1
DIMENSIONS ARE IN INCHES TOLERANCES: FRACTIONAL ±1/32 ANGULAR, MACH ±0.5 BEND ±2 ONE PLACE DECIMAL ±0.1 TWO PLACE DECIMAL ±0.01 THREE PLACE DECIMAL ±0.005 TWO PLACE DUAL (mm) [±0.12]	DRAWN	RDA	8/7/2017	
	CHECKED	HRC	8/7/2017	
	ENG APPR.	HRC	02-06-18	
	MFG APPR.	BDB	02-06-18	
	PRODUCTION	RK	02-06-18	
PROPRIETARY AND CONFIDENTIAL		COMMENTS:		
THE INFORMATION CONTAINED IN THIS DRAWING IS THE SOLE PROPERTY OF LINKTECH LLC. ANY REPRODUCTION OR DISCLOSURE IN PART OR AS A WHOLE WITHOUT THE WRITTEN PERMISSION OF LINKTECH LLC IS STRICTLY PROHIBITED.				