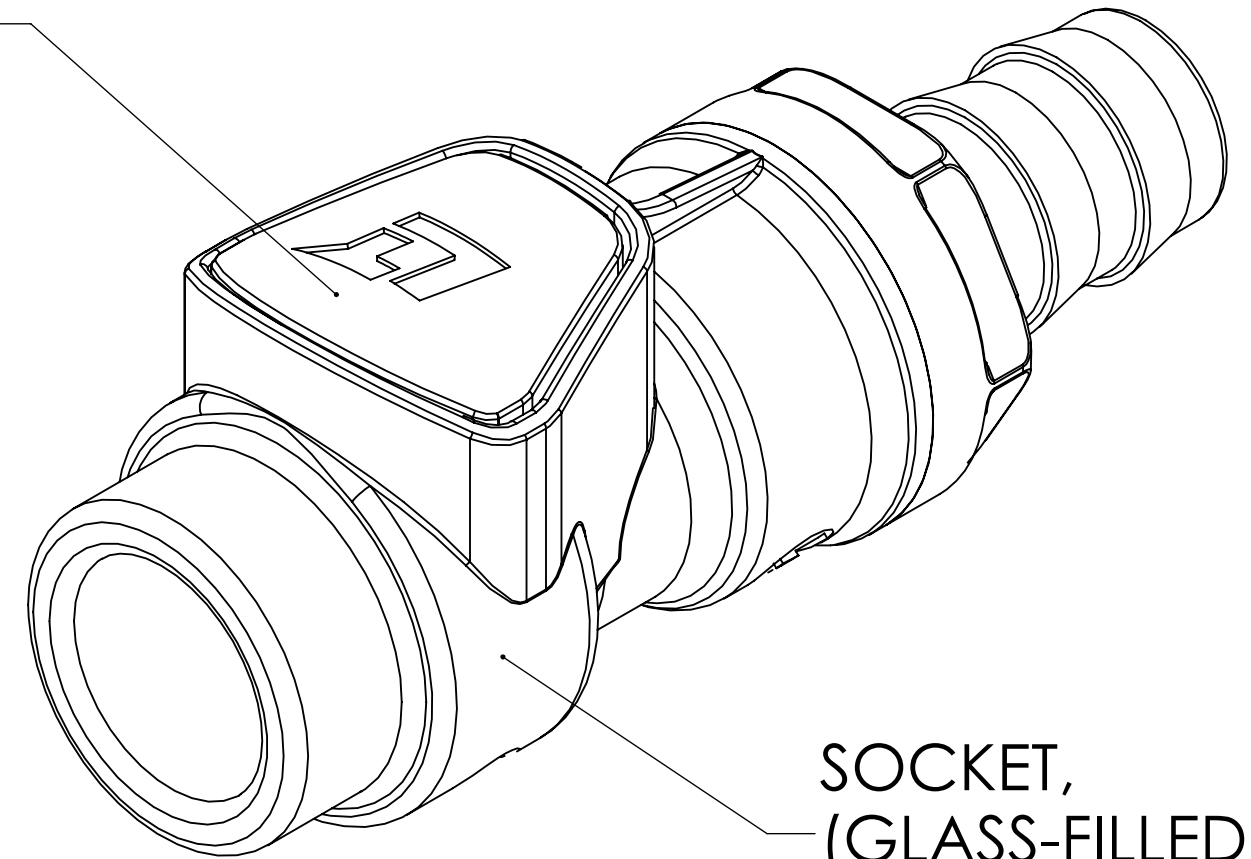
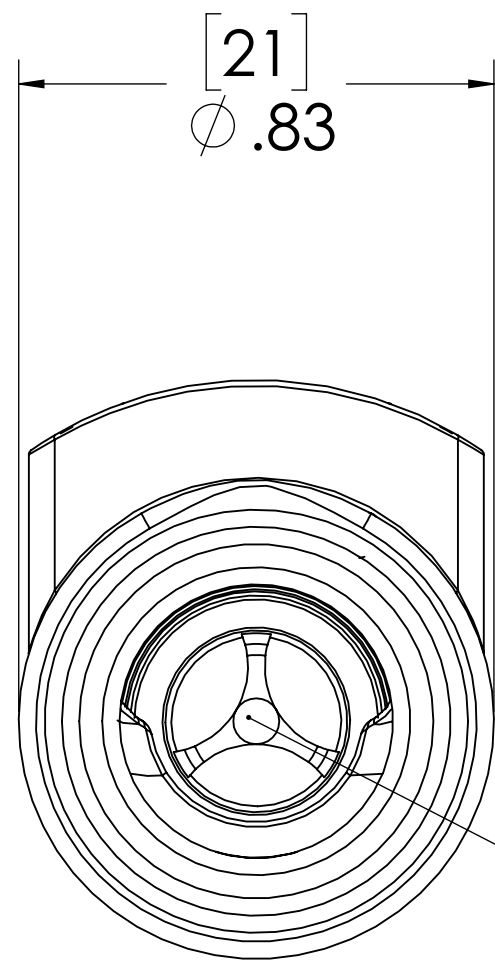


REVISIONS						
SHEET	ZONE	REV.	ECO	DESCRIPTION	DATE	APPROVED
1	ALL	A	50280	RELEASE FOR PRODUCTION	07/23/2018	HRC

LATCH,
(GLASS-FILLED
POLYPROPYLENE)

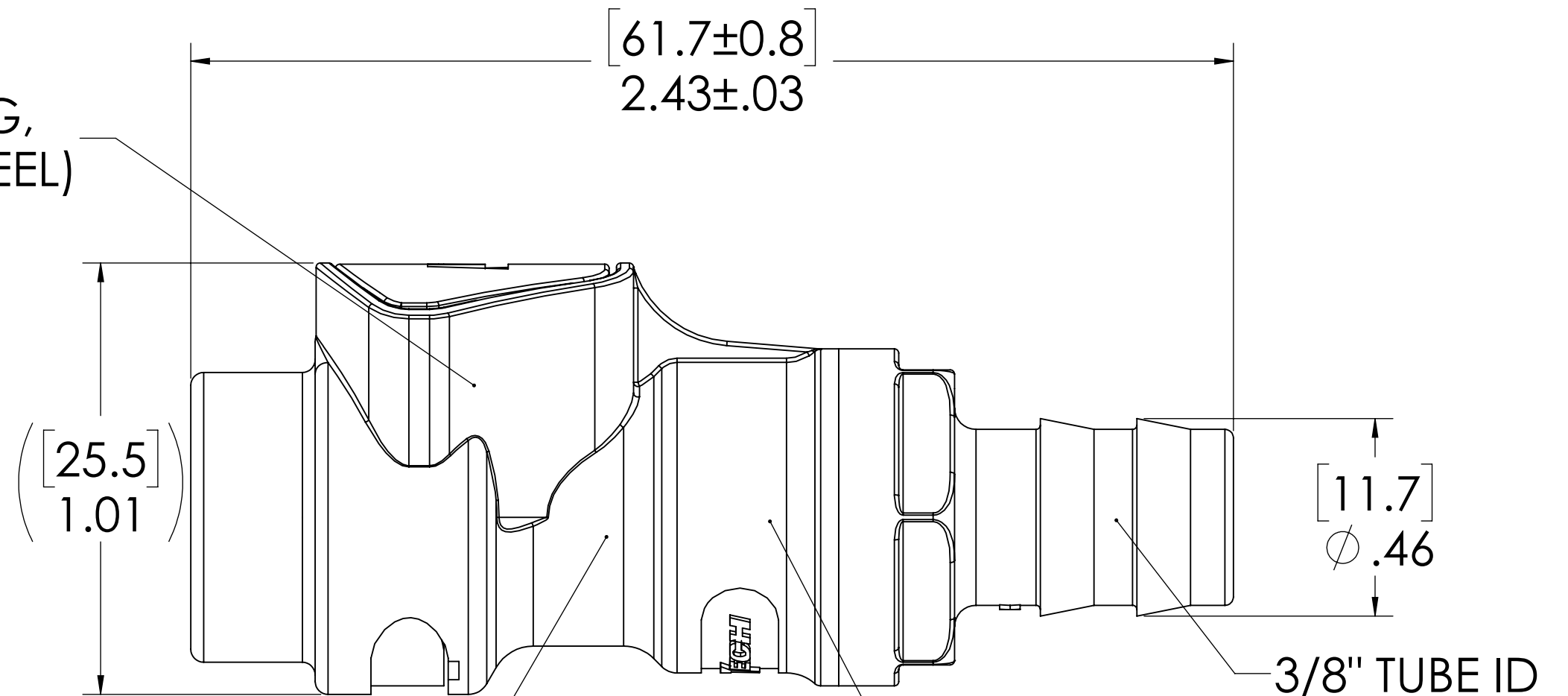


SOCKET,
(GLASS-FILLED
POLYPROPYLENE)



VALVE,
(GLASS-FILLED
POLYPROPYLENE)

LATCH SPRING,
(STAINLESS STEEL)




GROMMET,
(EPDM)

VALVE SPRING,
(STAINLESS STEEL)

NOTES:

1. MATERIAL: GLASS FILLED POLYPROPYLENE.
2. COLOR: GREY
3. GROMMET MATERIAL: PEROXIDE CURED EPDM.
4. GROMMET LUBRICATED WITH FOOD GRADE SILICONE, 350cST, SILICONE OIL.
5. SOCKET INTERCONNECTS WITH WALTHER-PRÄZISION KL-006 FLOW CONNECTORS.

FOR REFERENCE ONLY

UNLESS OTHERWISE SPECIFIED:	NAME	DATE	 PART NO: 70GPV-SE2-06 DESCRIPTION: 70GP SERIES STRAIGHT FEMALE, VALVED, 3/8" HB, GLASS FILLED POLYPROPYLENE SIZE DWG. NO. REV C 70GP700023 A SCALE: NTS WEIGHT: SHEET 1 OF 1	
DIMENSIONS ARE IN INCHES	DRAWN	CKE		6/5/2018
TOLERANCES:	CHECKED	CKE		6/5/2018
FRACTIONAL ±1/32	ENG APPR.	HRC		7/23/18
ANGULAR: MACH ±0.5 BEND ±2	MFG APPR.	BDB		7/23/18
ONE PLACE DECIMAL ±0.1	PRODUCTION	LAS	7/23/18	
TWO PLACE DECIMAL ±0.01	COMMENTS:			
THREE PLACE DECIMAL ±0.005				
TWO PLACE DUAL (mm) [±0.12]				