
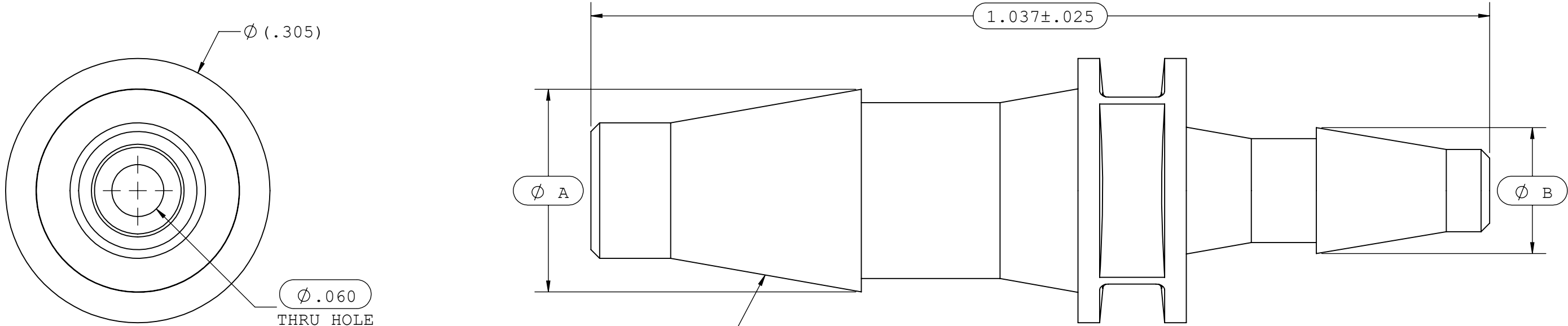
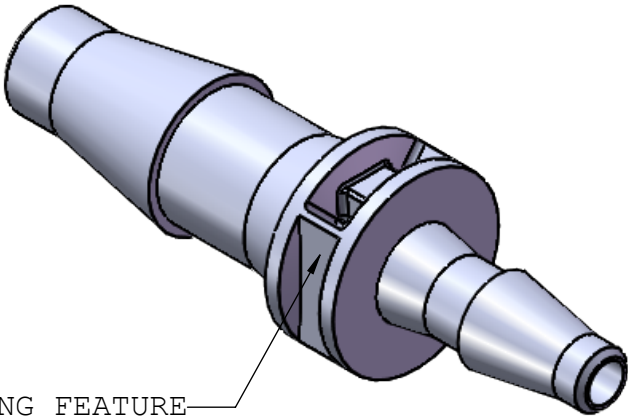


NOTES: FOR ADDITIONAL DETAILS, PLEASE CONTACT VP CUSTOMER SERVICE  
DIMENSIONS MARKED  ARE CONTROL DIMENSIONS

REVISIONS			
REV.	DESCRIPTION	DATE	APPROVED
A	ECO #0036	03-30-01	
B	CO 018 Drafting Update	08-18-05	RICKC
C	ECO 1081305	09-14-20	FJL



2X INSTRUMENT QUALITY PART. NO  
PARTING LINE PERMITTED ON  
THIS CONICAL SURFACE



OPTIONAL GATING FEATURE

Dimension	Material Specific Tolerances							
	Acetal	Nylon	PP	ABS	PC	PVC	Polysulfone	J1A
A	0.234	0.234	0.228	0.234	0.234	0.234	0.234	0.228
B	0.145	0.145	0.140	0.145	0.145	0.145	0.145	0.140
C								
D								
E								
F								

UNLESS OTHERWISE SPECIFIED DIMENSIONS ARE IN INCHES TOLERANCES ARE:  FRACTIONS    DECIMAL    ANGULAR ±                ±                ± .XX            ±.01            ± 1° .XXX          ±.005 .XXXX        ±.001  DO NOT SCALE DRAWING		<b>VALUE PLASTICS, INC</b>			
		PART NUMBER: 2040			
		DESCRIPTION: Straight Through Reduction Connector with Classic Series Barbs, 5/32" (4 mm) and 3/32" (2.25 mm) ID Tubing			
DRAWN BY: Frank Lombardi	DATE: 06-10-05	SIZE: <b>B</b>	SCALE: NTS	VER: 	DWG. NO. 1006887
MANAGER: Rick Cairns		© 2014 VALUE PLASTICS, INC			REV C
				SHEET: 1 OF 1	

FOR REFERENCE ONLY