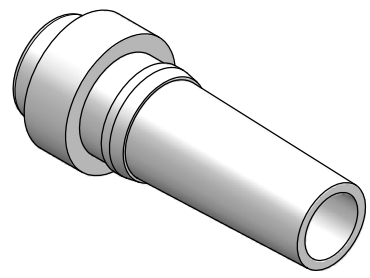
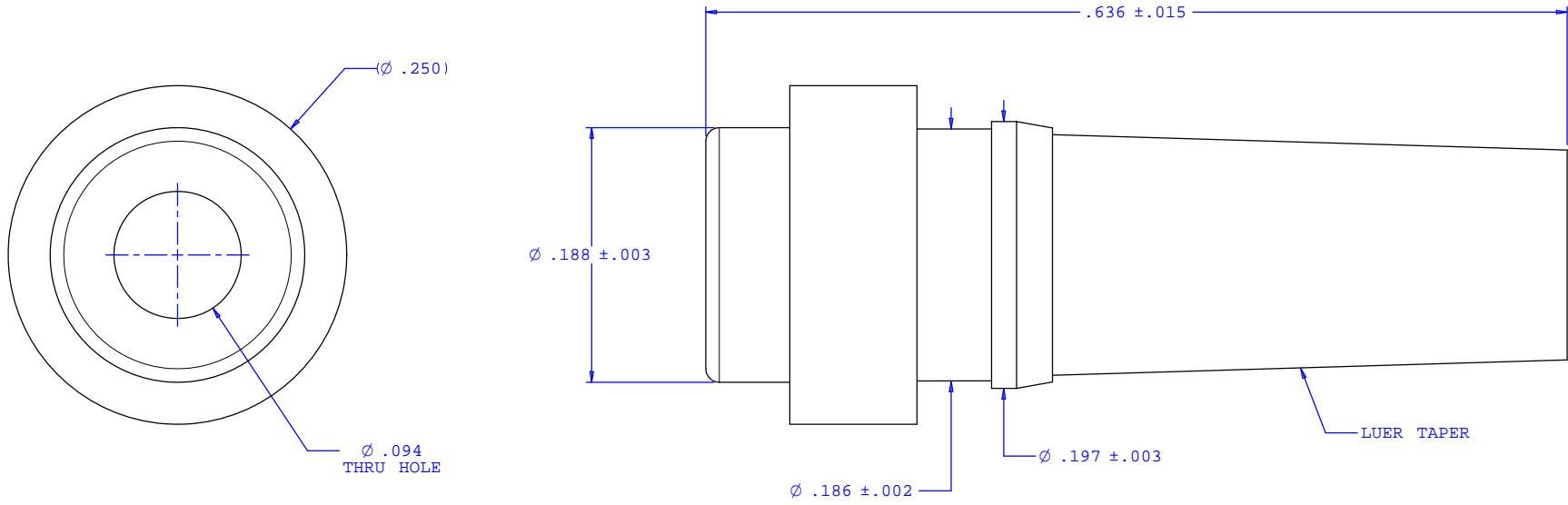


NOTE: FOR MORE DETAILS SEE YOUR V.P.CUSTOMER SERVICE REP.

REVISIONS			
REV.	DESCRIPTION	DATE	APPROVED
A	INITIAL RELEASE	11-18-97	
B	CO 046 Drafting Update	11-29-07	Rick C.



UNLESS OTHERWISE SPECIFIED DIMENSIONS ARE IN INCHES TOLERANCES ARE:		VALUE PLASTICS, INC.	
FRACTIONS ±	DECIMALS .XX ±.01 .XXX ±.005 .XXXX ±.001	ANGULAR ±1°	PART NUMBER: BDMMTL
DO NOT SCALE DRAWING		DESCRIPTION: Bondable Male Luer (May be used with seperate rotating lock ring ; RMLLR)	
DRAWN BY: Frank Lombardi	DATE: 05-05-06	SIZE: B	SCALE: NTS
ENGINEER/ MANAGER: Rick Cairns	DRAWING NUMBER: 1008769	REV. B	SHEET: 1 OF 1
© 2006 VALUE PLASTICS, INC.			

FOR REFERENCE ONLY