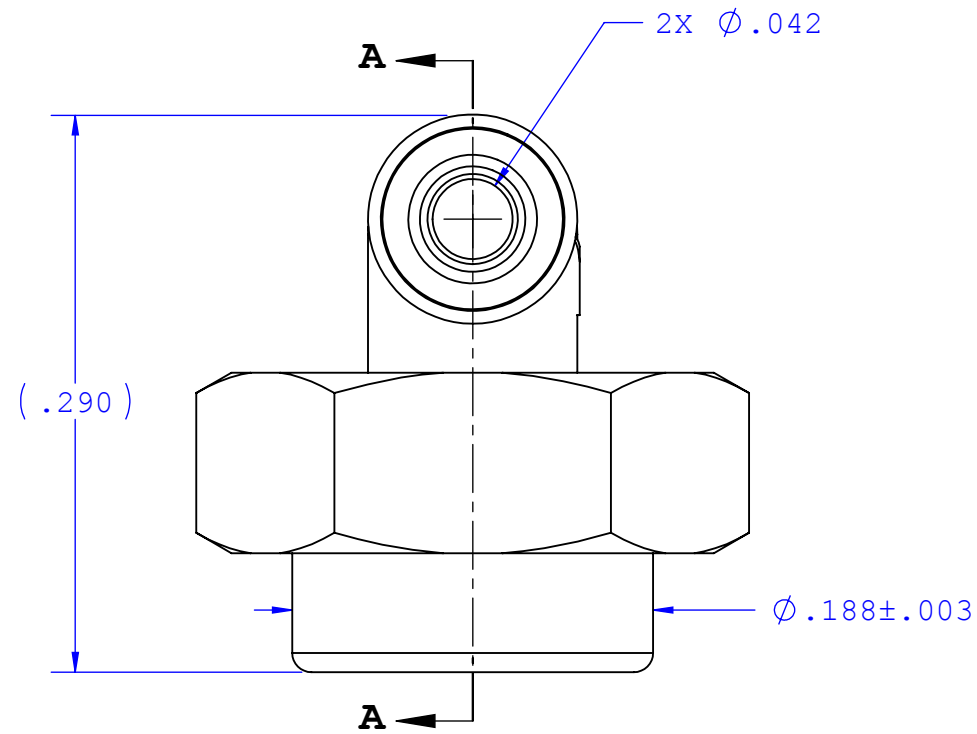
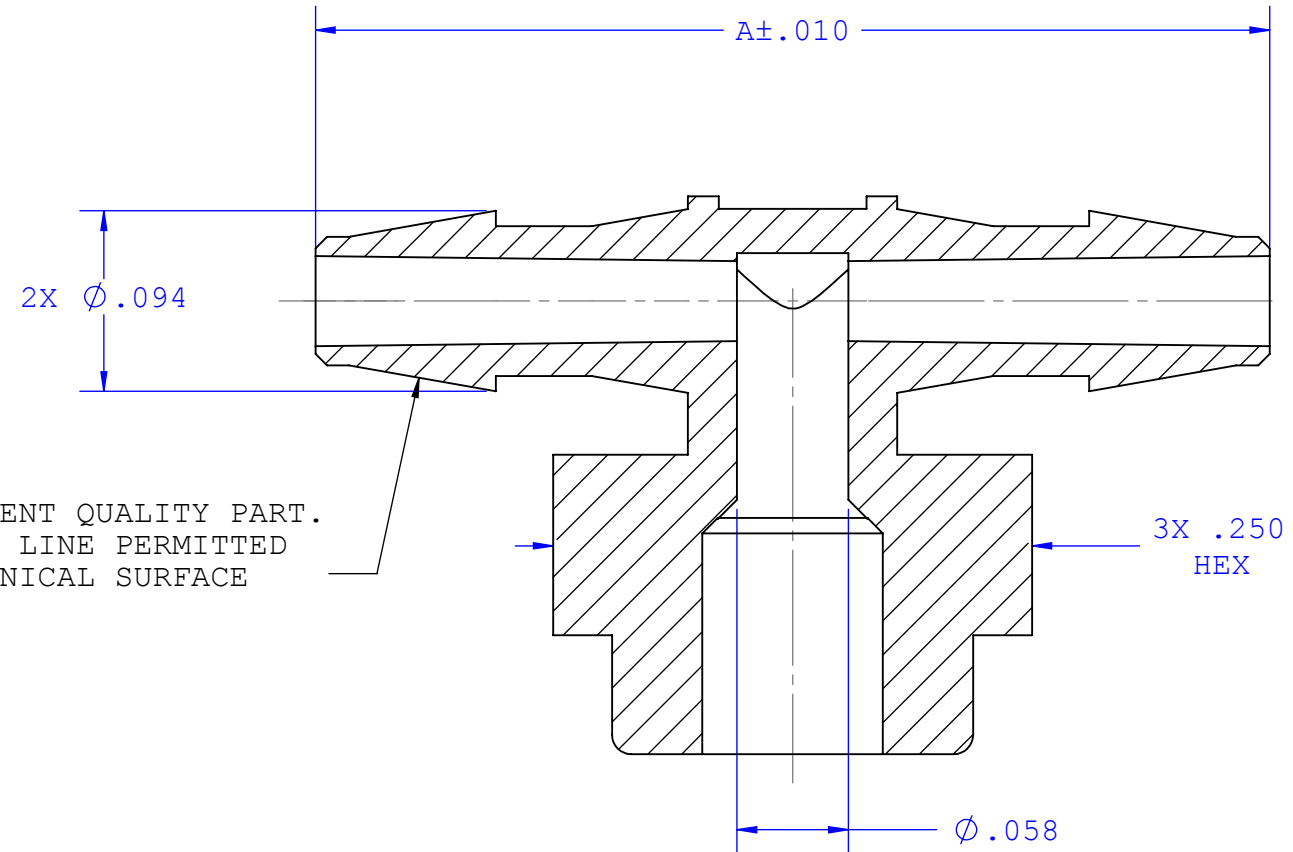


NOTES: FOR ADDITIONAL DETAILS, PLEASE CONTACT VP CUSTOMER SERVICE
 DIMENSIONS MARKED \square ARE CONTROL DIMENSIONS

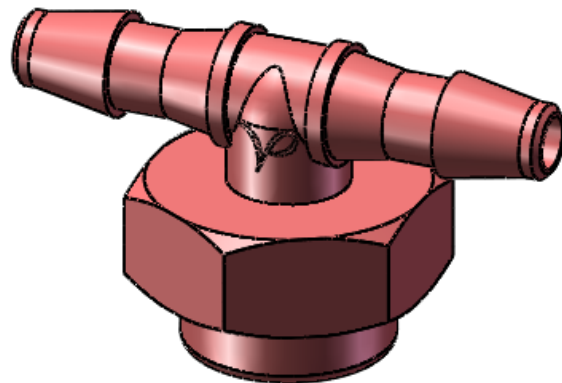
REVISIONS			
REV.	DESCRIPTION	DATE	APPROVED
A	INITIAL RELEASE	12-02-97	
B	CO 046 Drafting Update	11-30-07	R. Cairns
C	ECO 131 Change Ejector pin from flat to contoured design. Make -40 Polysulfone Material Specific.	05-26-09	R. Cairns



2X INSTRUMENT QUALITY PART.
 NO PARTING LINE PERMITTED
 ON THIS CONICAL SURFACE



SECTION A-A



Dimension	Material Specific Tolerances							
	Acetal	Nylon	PP	ABS	PC	PVC	Polysulfone	PVDF
A	.497	.497	.497	.510	.510	.510	.510	.497
B								
C								
D								
E								
F								

UNLESS OTHERWISE SPECIFIED DIMENSIONS ARE IN INCHES TOLERANCES ARE:		VALUE PLASTICS, INC			
FRACTIONS DECIMAL ANGULAR ± .XX ±.01 ± 1° .XXX ±.005 .XXXX ±.001		PART NUMBER: BDMT210			
DO NOT SCALE DRAWING		DESCRIPTION: Bondable Tee 200 Series Barb, 1/16" (1.5mm) ID Tubing			
DRAWN BY: randy.sakurada	DATE: 6/19/2009	SIZE: B	SCALE: NTS	VER: 1008783	DWG. NO. 1008783
ENGINEERING MGR: R. Cairns		© 2009 VALUE PLASTICS, INC			REV C
				SHEET: 1 OF 1	

FOR REFERENCE ONLY