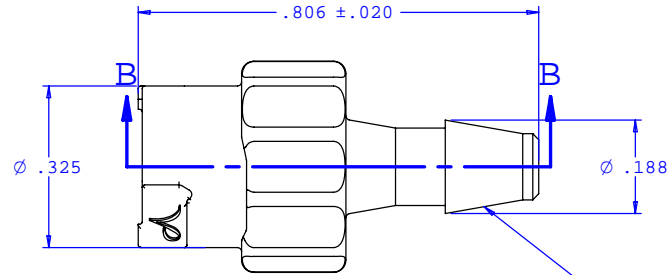
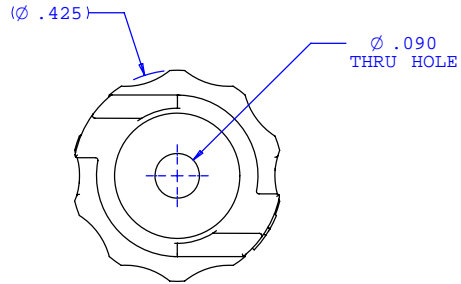
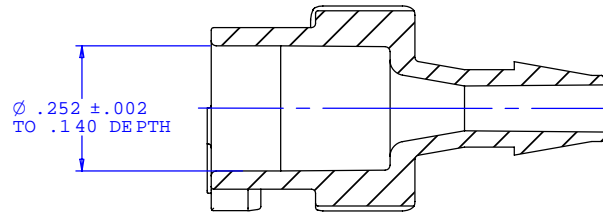


NOTE: FOR MORE DETAILS SEE YOUR V.P.CUSTOMER SERVICE REP.

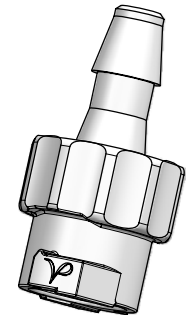
REVISIONS			
REV.	DESCRIPTION	DATE	APPROVED
A	INITIAL RELEASE	2-24-07	SNR



INSTRUMENT QUALITY PART. NO PARTING LINE PERMITTED ON THIS CONICAL SURFACE



SECTION B-B



UNLESS OTHERWISE SPECIFIED DIMENSIONS ARE IN INCHES TOLERANCES ARE:		<b>VALUE PLASTICS, INC.</b>	
FRACTIONS ±	DECIMALS .XX ±.01 .XXX ±.005 .XXXX ±.001	ANGULAR ±1°	PART NUMBER: <b>BPLF230</b>
DO NOT SCALE DRAWING		DESCRIPTION: 200 Series Barb Twist to Lock BP Fitting	
DRAWN BY: <b>B. Elshof</b>	DATE: <b>06-08-07</b>	SIZE: <b>B</b>	SCALE: <b>NTS</b>
New Product Development Manager: <b>Ravi Narayanan</b>		DRAWING NUMBER: <b>1010439</b>	REV. <b>A</b>
© 2007 VALUE PLASTICS, INC.		SHEET: 1 OF 1	

**FOR REFERENCE ONLY**