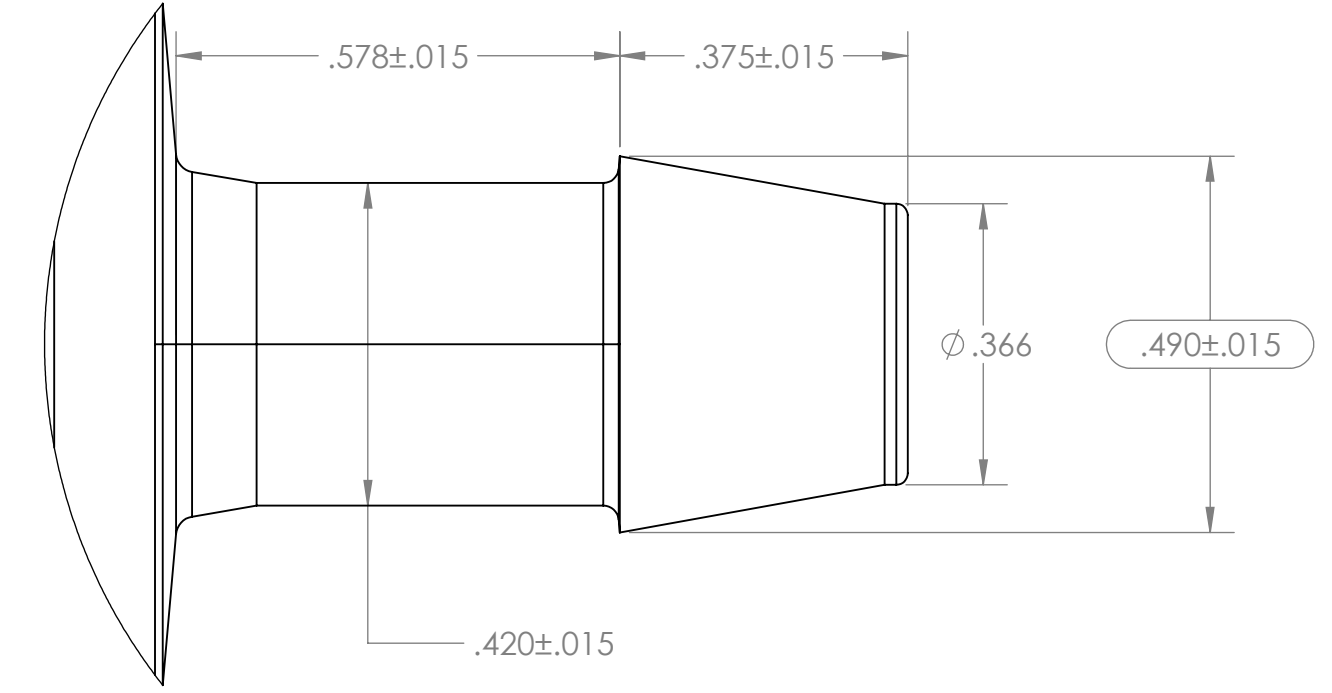
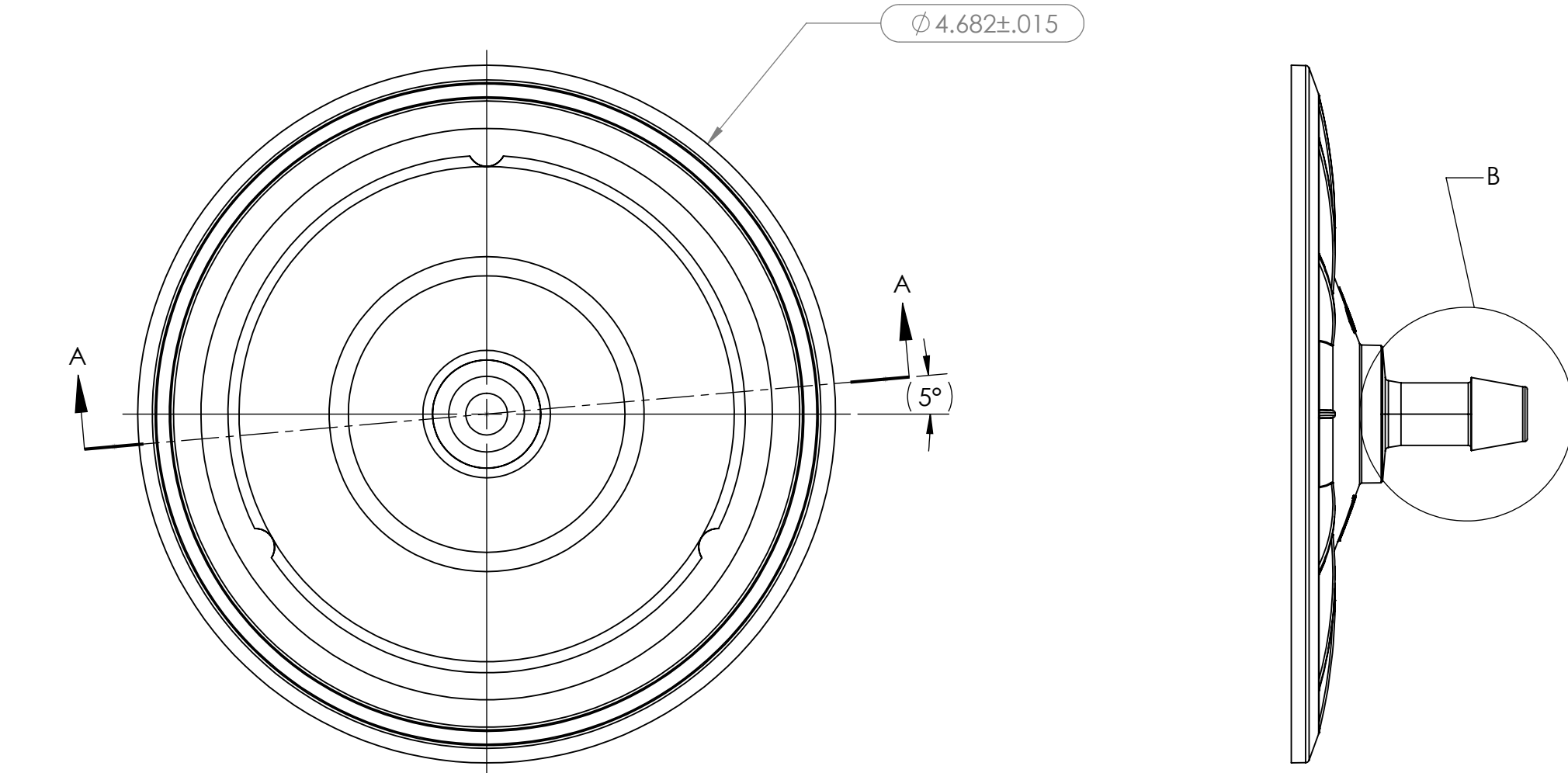
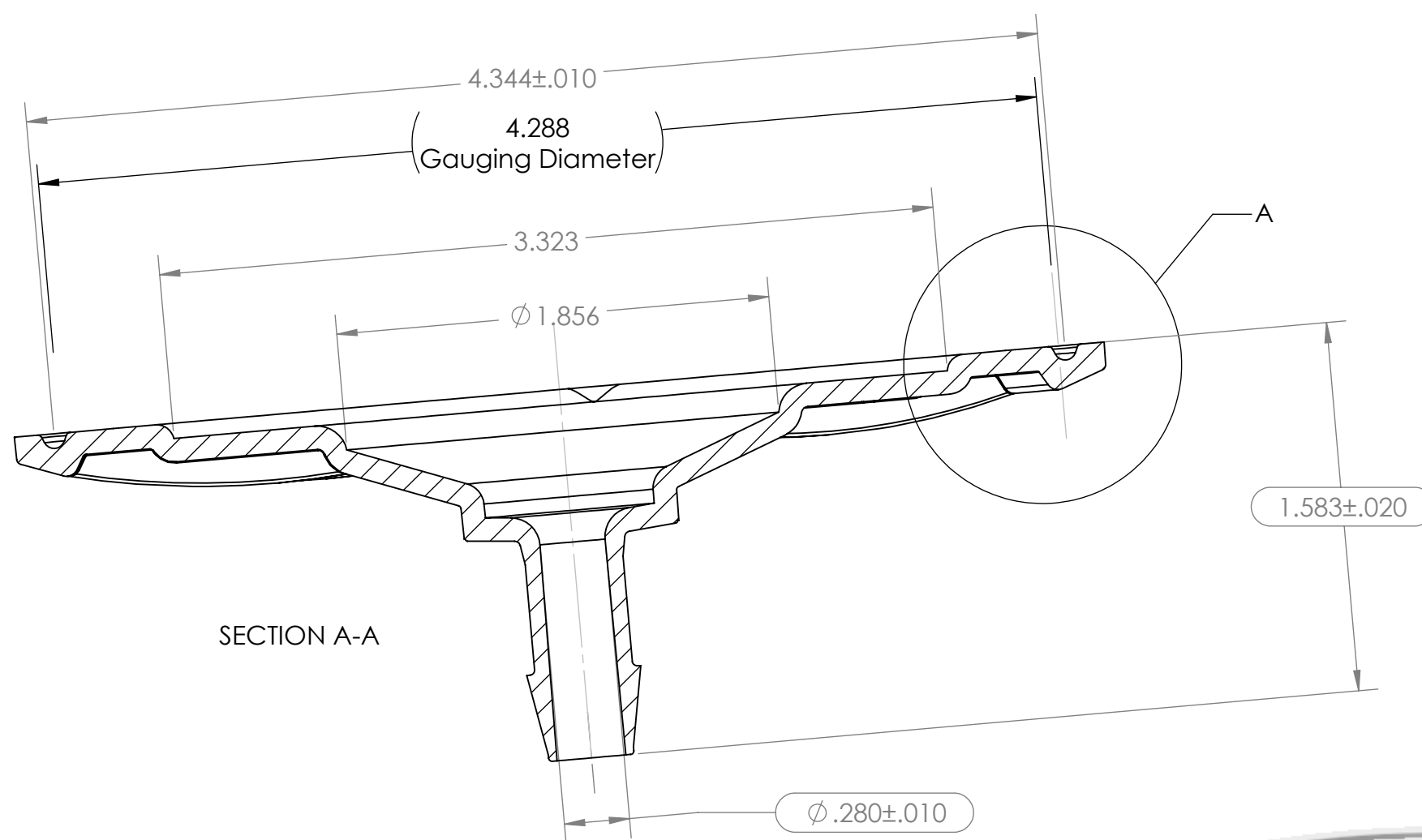


- NOTES: 1. FOR ADDITIONAL DETAILS, PLEASE CONTACT VP NEW PRODUCT DEVELOPMENT  
 2. DIMENSIONS MARKED   ARE CONTROL DIMENSIONS  
 3. ALL EXTERIOR SURFACES HAVE A MAXIMUM OF 20 Ra MICROINCH SURFACE FINISH  
 4. ALL INTERIOR SURFACES HAVE A MAXIMUM OF 15 Ra MICROINCH SURFACE FINISH  
 5. VALUE PLASTICS FERRULES ARE DESIGNED TO COMPLY WITH ASME BPE-2016 TABLE DT-7-1 HYGIENIC CLAMP FERRULE STANDARD DIMENSIONS & TOLERANCES; DT-9.3-1 HYGIENIC CLAMP FERRULE: DESIGN CRITERIA. REF PM-4.6.1.2. PERFORMANCE NOTE.  
 6. ALL INTERIOR AND EXTERIOR SURFACE FINISHES COMPLY WITH ASME BPE-2016 TABLE SF-3.4-1 SFP2 Ra READINGS FOR POLYMERIC PRODUCT CONTACT SURFACES  
 7. ALL GUSSETS SURFACE FINISH TO BE B2 SURFACE FINISH.

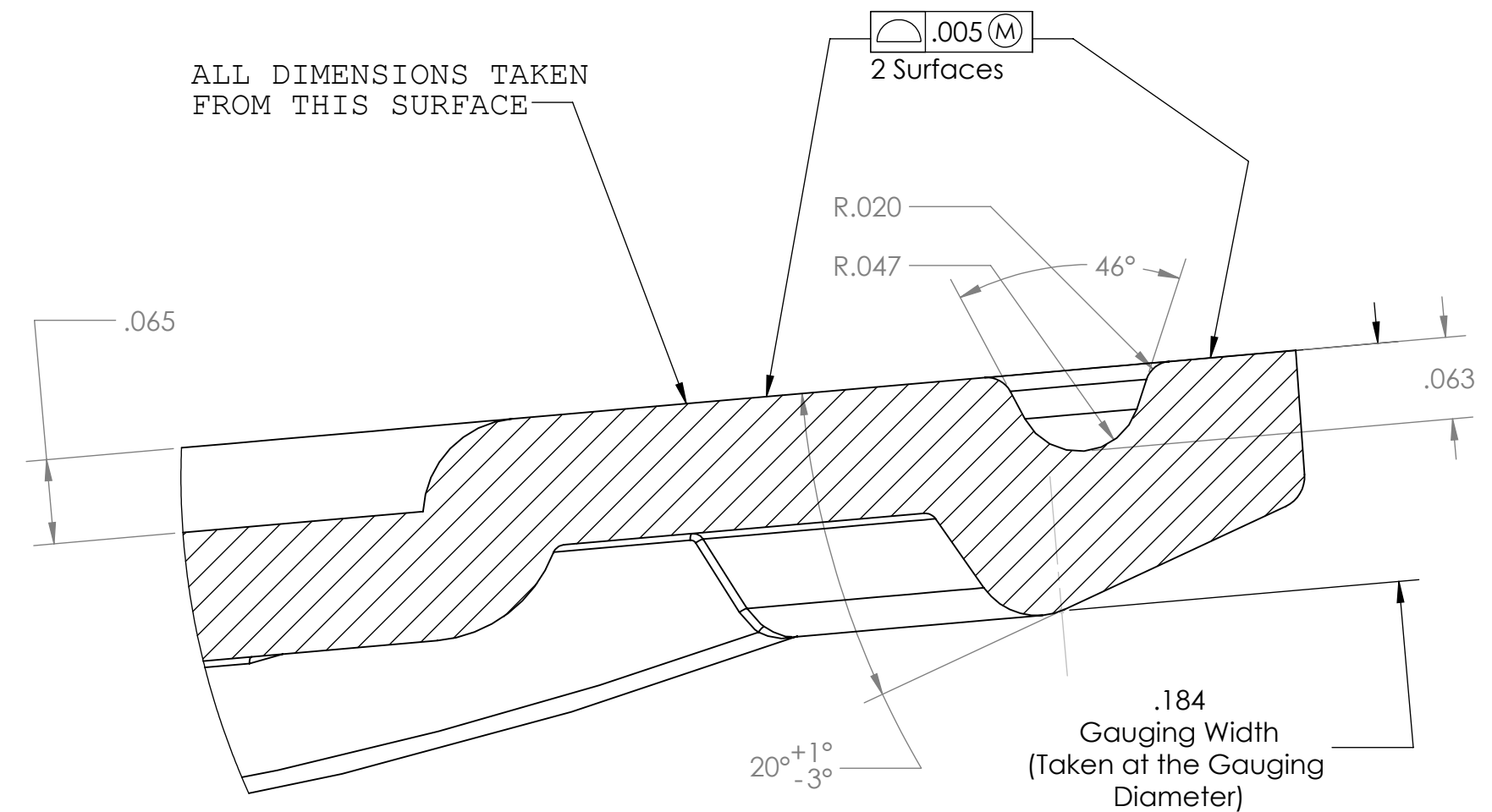
REVISIONS			
REV.	DESCRIPTION	DATE	APPROVED
A	Initial Release	05-15-19	FJL



DETAIL B

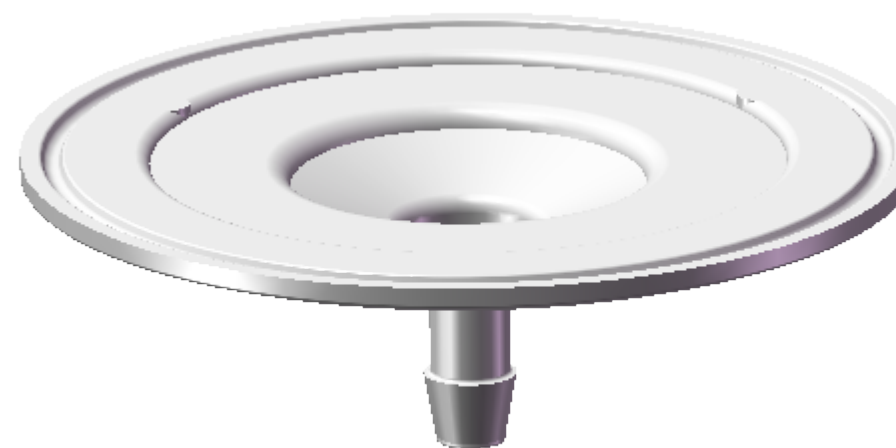


SECTION A-A



DETAIL A

ALL DIMENSIONS TAKEN FROM THIS SURFACE



Prepared For: Ceva Biomune		Attention: Tony Butler	
Signature	Title	Date	
Signature Indicates Design Approval			
Send Approved Document Via Fax: 970-267-3578			
For Technical Questions Contact: Sales@valueplastics.com or 970-267-5200			

UNLESS OTHERWISE SPECIFIED DIMENSIONS ARE IN INCHES TOLERANCES ARE:				<b>VALUE PLASTICS, INC</b>			
FRACTIONS ±		DECIMALS .XX ±.01 .XXX ±.005 .XXXX ±.001		ANGULAR ±1°		PART NUMBER: CF1068	
DO NOT SCALE DRAWING				DESCRIPTION: 4" Ferrule Hygienic Fitting, Custom with 600 Series, 3/8 Barb			
DRAWN BY: T. Whitaker	DATE: 5/16/2019	SIZE: <b>C</b>	SCALE: NTS	DRAWING NUMBER: 1068186	REV A		
ENG MGR: F. Lombardi	DATE: 5/16/2019	© 2014 VALUE PLASTICS, INC			SHEET:	SHEET 1 of 1	

**FOR REFERENCE ONLY**