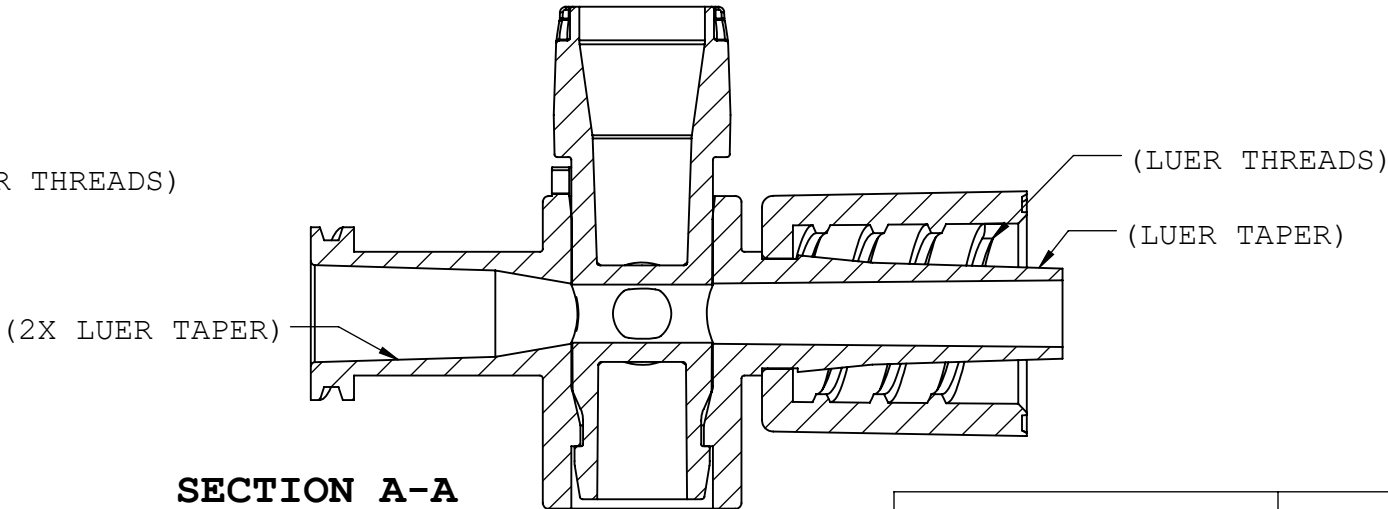
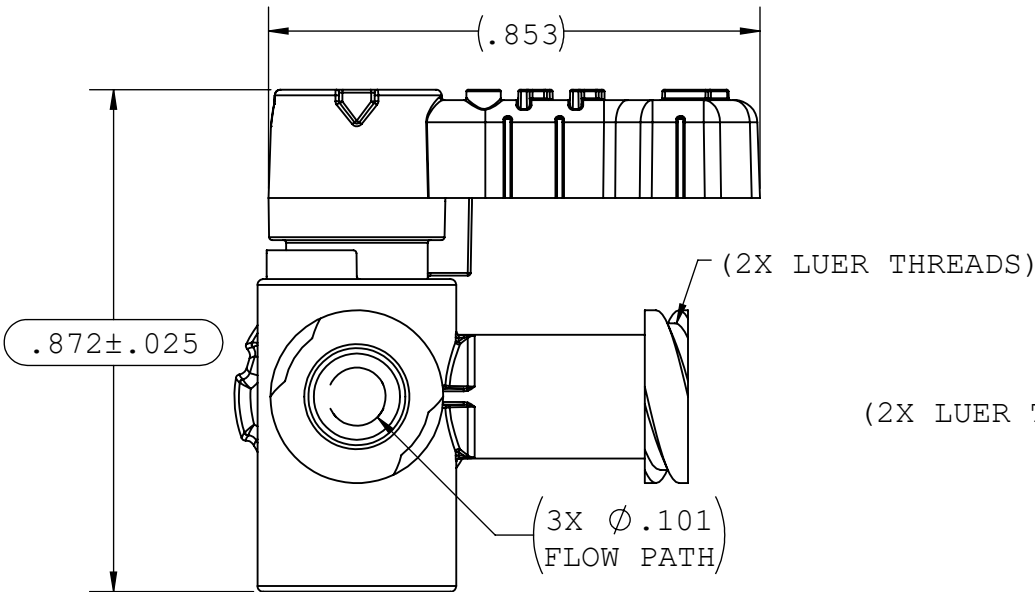
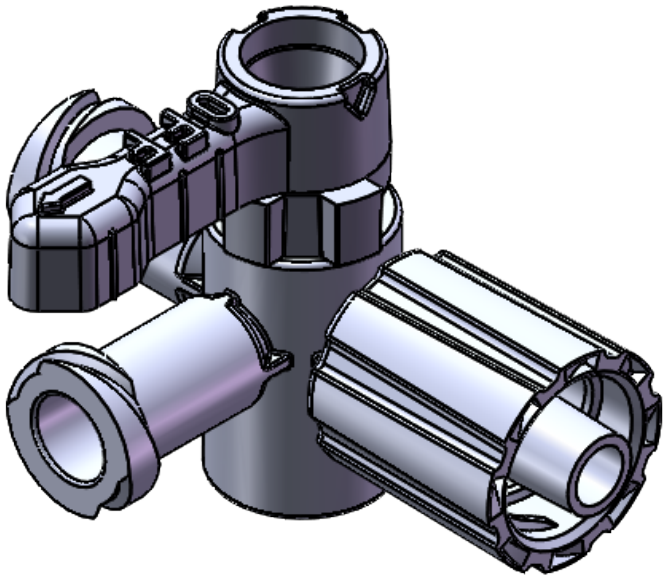
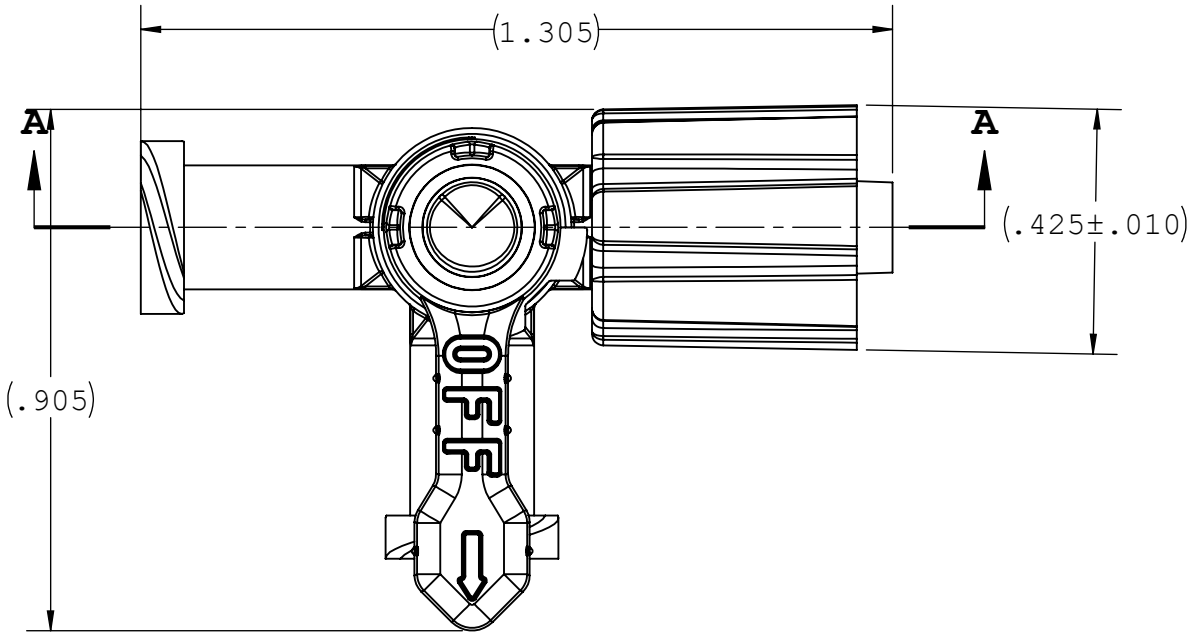


NOTES: FOR ADDITIONAL DETAILS, PLEASE CONTACT VP CUSTOMER SERVICE
DIMENSIONS MARKED ARE CONTROL DIMENSIONS
 PARTS ARE ASSEMBLED IN THE ORIENTATION SHOWN ON THE DRAWING
 ANGLE ALLOWANCE OF DIVERTER ± 10 DEGREES

| REVISIONS | | | |
|-----------|-----------------|----------|----------|
| REV. | DESCRIPTION | DATE | APPROVED |
| A | INITIAL RELEASE | 09/15/14 | K.R.S. |
| B | ECO 311 | 03/16/16 | K.R.S. |
| C | ECO 1296242 | 03-01-22 | FJL |



SECTION A-A

| | | | | | | |
|--|-------------------|--|--------|------|----------|------------------|
| UNLESS OTHERWISE SPECIFIED DIMENSIONS ARE IN INCHES TOLERANCES ARE: FRACTIONS DECIMAL ANGULAR ± .XX ±.01 ± 1° .XXX ±.005 .XXXX ±.001 DO NOT SCALE DRAWING | | VALUE PLASTICS, INC | | | | |
| | | PART NUMBER: FCLBFFMR-1A | | | | |
| | | DESCRIPTION: STOPCOCK, 3-WAY, LG BORE, FL TO FL TO ML BODY, 1 ARROW DIVERTER, LUER LOCK NUT | | | | |
| | | SIZE: | SCALE: | VER: | DWG. NO. | REV |
| DRAWN BY: marie.morleyjahn | DATE: 3/1/2022 | B | NTS | | 1031770 | C |
| MANAGER: kyles | | © 2014 VALUE PLASTICS, INC | | | | SHEET: 1 OF 1 |

FOR REFERENCE ONLY