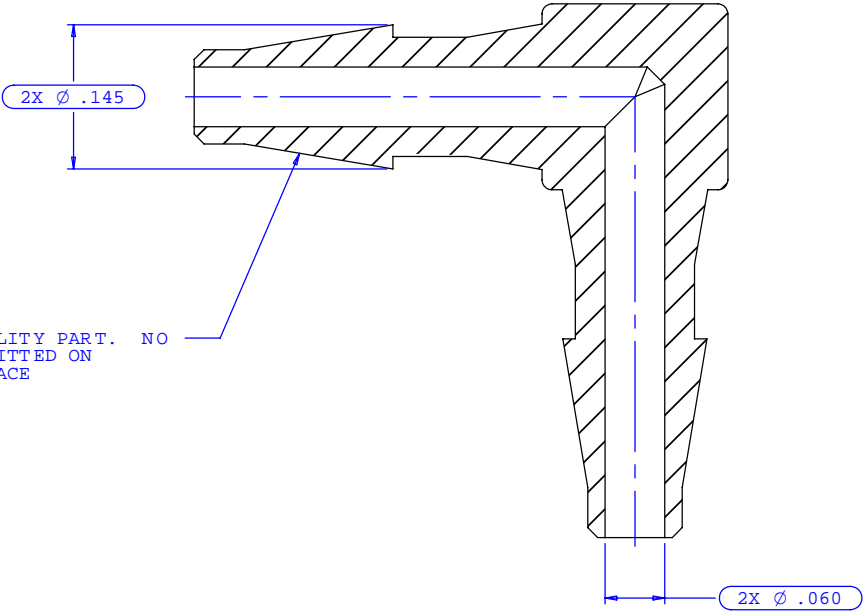
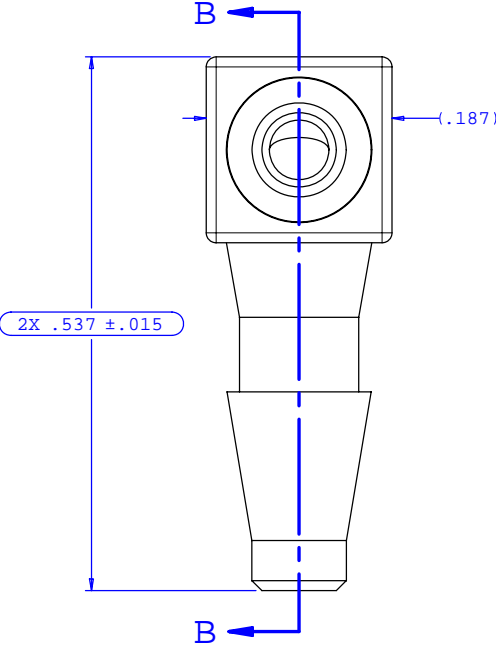
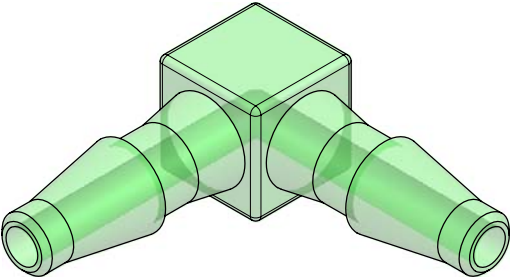


NOTE: FOR MORE DETAILS SEE YOUR V.P.CUSTOMER SERVICE REP.

REVISIONS			
REV.	DESCRIPTION	DATE	APPROVED
A	INITIAL RELEASE	04-29-98	
B	CO 027 Drafting Update	10-10-05	Rick C.



2X INSTRUMENT QUALITY PART. NO  
PARTING LINE PERMITTED ON  
THIS CONICAL SURFACE



UNLESS OTHERWISE SPECIFIED DIMENSIONS ARE IN INCHES TOLERANCES ARE:				<b>VALUE PLASTICS, INC.</b>			
FRACTIONS	DECIMALS	ANGULAR		PART NUMBER:	<b>L20</b>		
±	.XX ±.01 .XXX ±.005 .XXXX ±.001	±1°		DESCRIPTION:	Elbow Connector with Classic Series Barbs, 3/32" (2.25 mm) ID Tubing		
DO NOT SCALE DRAWING				SIZE:	SCALE:	DRAWING NUMBER:	REV.
DRAWN BY: <b>Frank Lombardi</b>				B	NTS	<b>1007488</b>	B
DATE: <b>09-13-05</b>				Engineer Manager: <b>Rick Cairns</b>			
				© 2005 VALUE PLASTICS, INC.		SHEET: 1 OF 1	

FOR REFERENCE ONLY