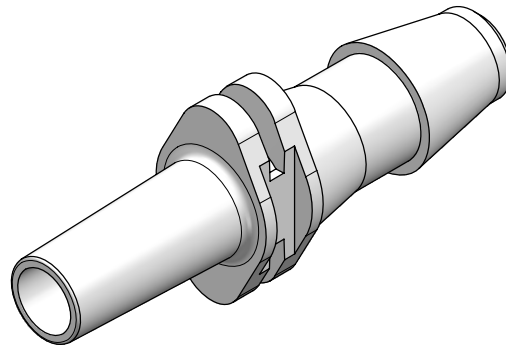
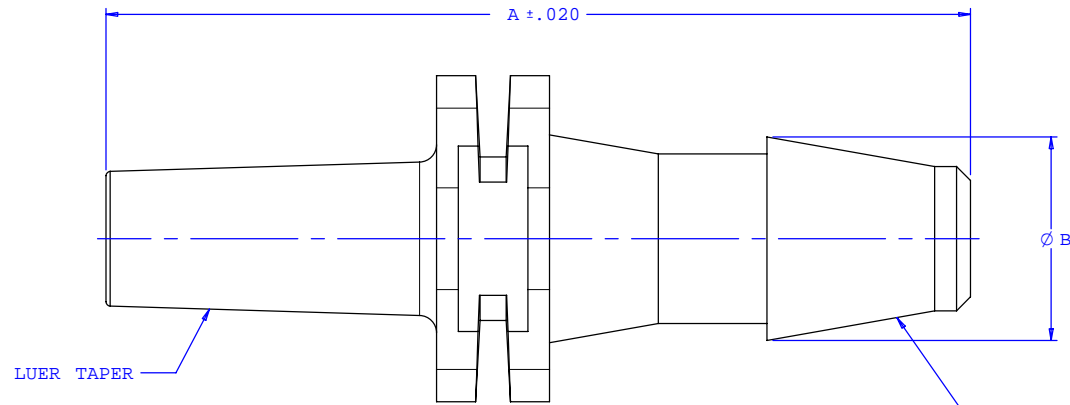
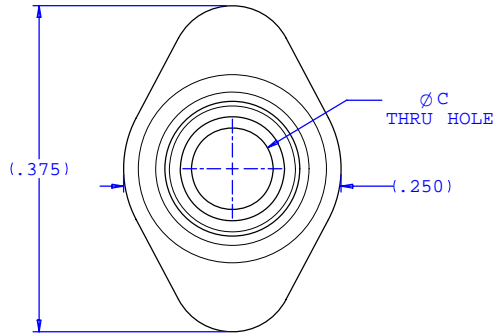


NOTE: FOR MORE DETAILS SEE YOUR V.P.CUSTOMER SERVICE REP.

REVISIONS			
REV.	DESCRIPTION	DATE	APPROVED
A	INITIAL RELEASE	09-07-02	
B	CO 015 Drafting Update	05-16-05	Rick C.



Dimension	Material Specific Tolerances							
	Acetal	Nylon	PP	ABS	PC	PVC	Polysulfone	J1A
A	.994	.994	.994	.994	1.000	.994	.994	.979
B	.234	.234	.234	.234	.234	.234	.234	.228
C	.094	.090	.090	.094	.094	.094	.094	.090
D								
E								
F								

UNLESS OTHERWISE SPECIFIED DIMENSIONS ARE IN INCHES TOLERANCES ARE:		VALUE PLASTICS, INC.	
FRACTIONS ±	DECIMALS .XX ±.01 .XXX ±.005 .XXXX ±.001	ANGULAR ±1°	PART NUMBER: MTLS240
DO NOT SCALE DRAWING		DESCRIPTION: Male Luer Slip to 200 Series Barb, 5/32" (4 mm) ID Tubing	
DRAWN BY: Frank Lombardi 04-28-05	DATE:	SIZE: B	SCALE: NTS
Engineer/Manager: Rick Cairns		DRAWING NUMBER: 1006428	REV. B
© 2005 VALUE PLASTICS, INC.		SHEET: 1 OF 1	

FOR REFERENCE ONLY