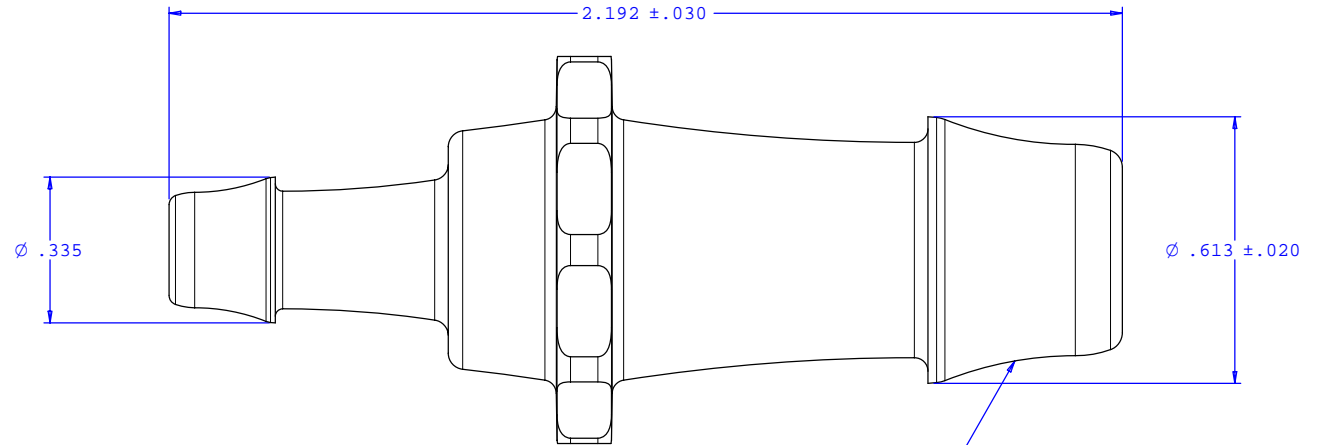
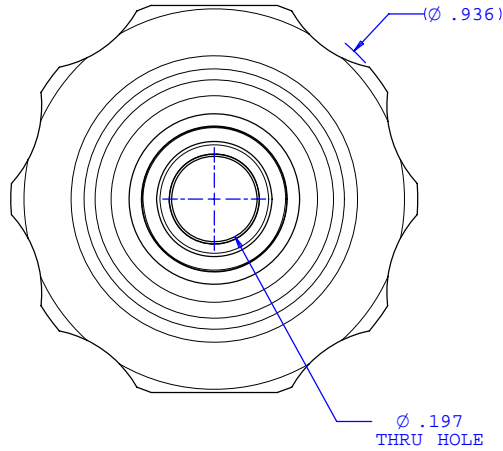
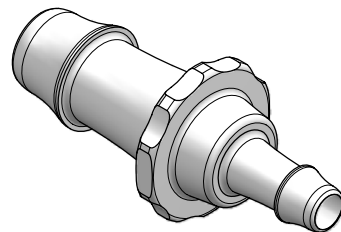


NOTE: FOR MORE DETAILS SEE YOUR V.P.CUSTOMER SERVICE REP.

REVISIONS			
REV.	DESCRIPTION	DATE	APPROVED
A	INITIAL RELEASE	02-06-03	
B	CO 046 Drafting Update	08-22-06	Rick C.



2X INSTRUMENT QUALITY PART. NO PARTING LINE PERMITTED ON THIS CONICAL SURFACE



UNLESS OTHERWISE SPECIFIED DIMENSIONS ARE IN INCHES TOLERANCES ARE:		VALUE PLASTICS, INC.	
FRACTIONS ±	DECIMALS .XX ±.01 .XXX ±.005 .XXXX ±.001	ANGULAR ±1°	PART NUMBER: N080/055
DO NOT SCALE DRAWING		DESCRIPTION: Straight Through Reduc tion Connector With 500 Series Barbs, 1/2" (12.5 mm) and 1/4" (6.25 mm) ID Tubing	
DRAWN BY: Frank Lombardi 06-10-06	DATE:	SIZE: B SCALE: NTS	DRAWING NUMBER: 1008983
Engineer/Manager: Rick Cairns		© 2006 VALUE PLASTICS, INC.	REV. B SHEET: 1 OF 1

FOR REFERENCE ONLY