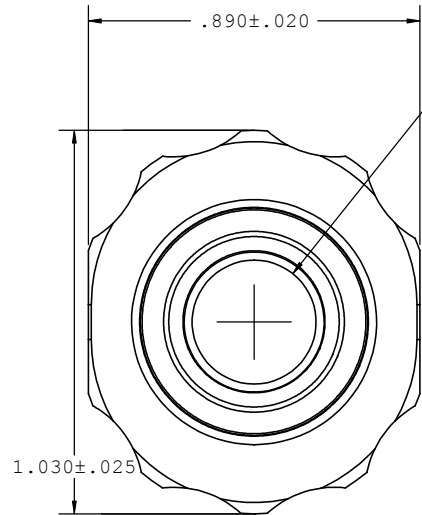
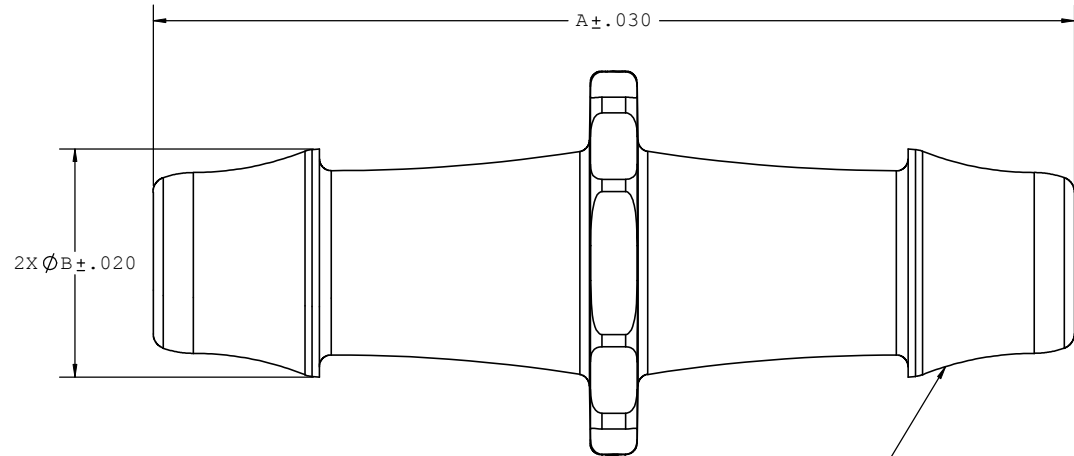


NOTE: FOR MORE DETAILS SEE YOUR V.P. CUSTOMER SERVICE REP.

REVISIONS			
REV.	DESCRIPTION	DATE	APPROVED
A	INITIAL RELEASE	02-06-03	
B	CO 039 Drafting Update	02-20-06	R. Cairns
C	ECO 075 Grip Revision	03-04-08	R. Cairns



Ø.333±.010
THRU HOLE



2X INSTRUMENT QUALITY PART.
NO PARTING LINE PERMITTED
ON THIS CONICAL SURFACE.

MATERIAL SPECIFIC TOLERANCES

DIMENSION	Acetal	Nylon	PP	ABS	PC	PVC	Polysulfone	J1A
A	2.475	2.475	2.454	2.475	2.475	2.475	2.475	2.475
B	.613	.613	.601	.613	.613	.613	.613	.613
C								
D								

UNLESS OTHERWISE SPECIFIED
DIMENSIONS ARE IN INCHES
TOLERANCES ARE:
FRACTIONS DECIMAL ANGULAR
± .XX ±.01 ± 1°
.XXX ±.005
.XXXX ±.001
DO NOT SCALE DRAWING

DRAWN BY: DOUG KIMMEL
DATE: 5/8/2008
ENGINEERING MANAGER: R. Cairns

VALUE PLASTICS, INC

PART NUMBER: N080
DESCRIPTION: Straight Through Connector with 500 Series Barbs, 1/2" (12.7mm) ID Tubing
SIZE: B SCALE: NTS DWG. NO.: 1008234 REV: C
© 2008 VALUE PLASTICS, INC SHEET: 1 OF 1

FOR REFERENCE ONLY