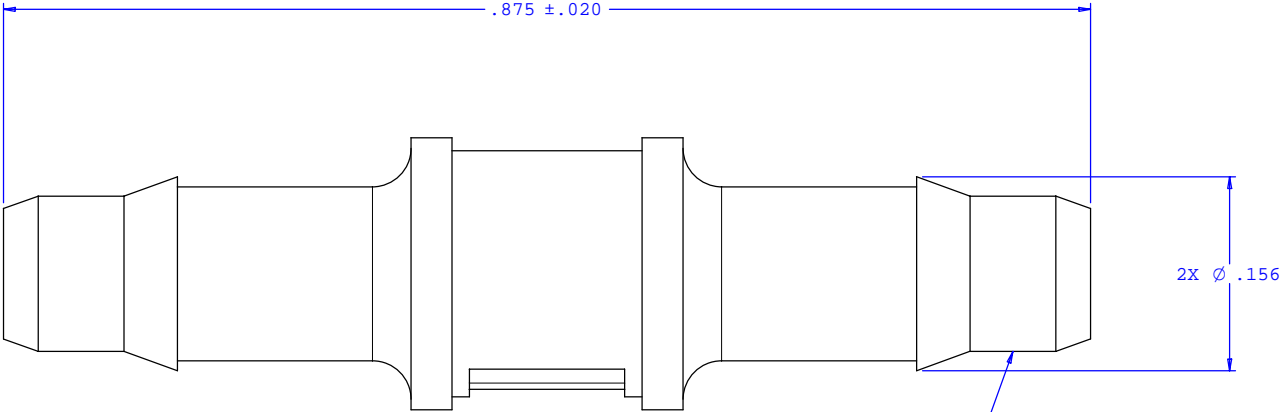
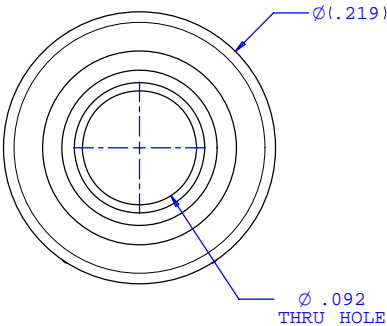
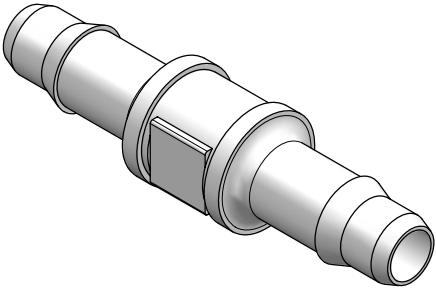


NOTE: FOR MORE DETAILS SEE YOUR V.P.CUSTOMER SERVICE REP.

REVISIONS			
REV.	DESCRIPTION	DATE	APPROVED
A	INITIAL RELEASE	02-18-97	
B	CO 039 Drafting Update	05-08-06	Rick C.



2X INSTRUMENT QUALITY PART. NO  
PARTING LINE PERMITTED ON  
THIS CONICAL SURFACE



UNLESS OTHERWISE SPECIFIED DIMENSIONS ARE IN INCHES TOLERANCES ARE:  FRACTIONS    DECIMALS    ANGULAR ±    .XX    ±.01    ±1° .XXX    ±.005 .XXXX    ±.001  DO NOT SCALE DRAWING		<b>VALUE PLASTICS, INC.</b>	
		PART NUMBER: <b>N430</b>	
DRAWN BY: <b>Frank Lombardi</b> DATE: <b>01-21-06</b>		DESCRIPTION: <b>Straight Through Connector with 400 Series barbs, 1/8" (3 mm) ID Tubing</b>	
Engineer Manager: <b>Rick Cairns</b>		SIZE: <b>B</b> SCALE: <b>NTS</b>	DRAWING NUMBER: <b>1008153</b> REV. <b>B</b>
		© 2005 VALUE PLASTICS, INC.	SHEET: <b>1 OF 1</b>

FOR REFERENCE ONLY