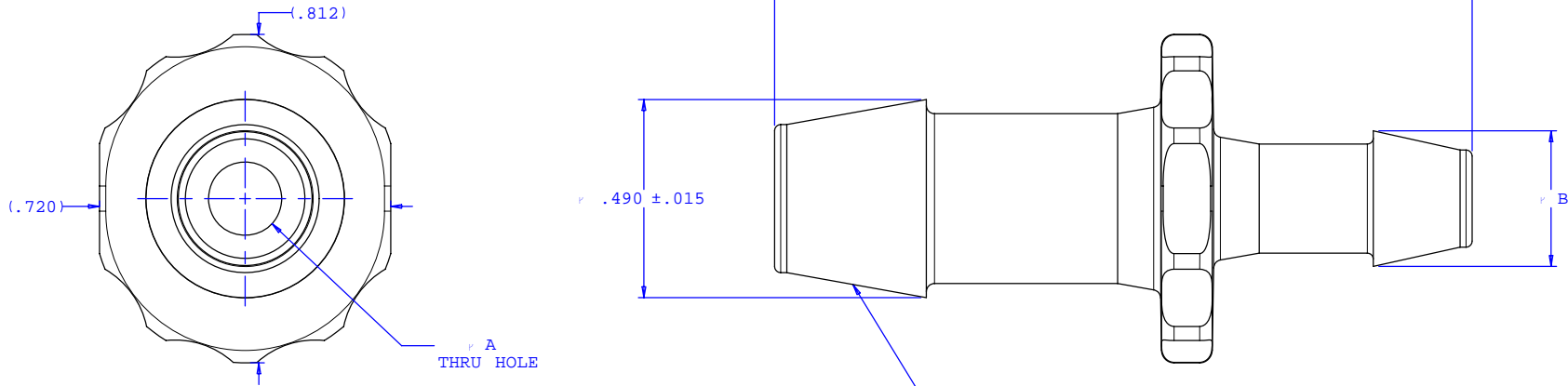
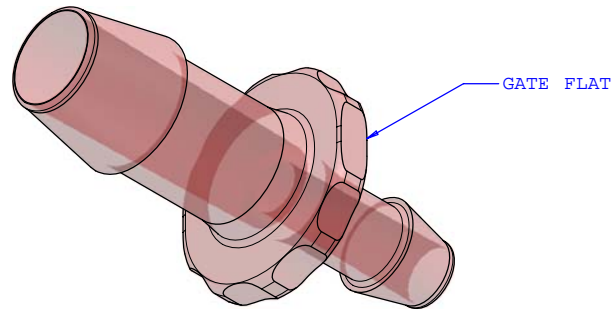


NOTE: FOR MORE DETAILS SEE YOUR V.P. CUSTOMER SERVICE REP.

REVISIONS			
REV.	DESCRIPTION	DATE	APPROVED
A	INITIAL RELEASE	04-22-05	RICK C.



2X INSTRUMENT QUALITY PART. NO PARTING LINE PERMITTED ON THIS CONICAL SURFACE



Dimension	Material Specific Tolerances							
	Acetal	Nylon	PP	ABS	PC	PVC	Polysulfone	J1A
A	.181	.181	.175	.181	.181	.181	.181	.181
B	.335	.335	.328	.335	.335	.335	.335	.335
C								
D								
E								
F								

UNLESS OTHERWISE SPECIFIED DIMENSIONS ARE IN INCHES TOLERANCES ARE:		<b>VALUE PLASTICS, INC.</b>	
FRACTIONS ±	DECIMALS .XX ±.01 .XXX ±.005 .XXXX ±.001	ANGULAR ±1°	PART NUMBER: <b>N670/655</b>
DO NOT SCALE DRAWING		DESCRIPTION: Straight Through Reduction Connector With 600 Series Barbs, 3/8" (9.5 mm) and 1/4" (6.25 mm) ID Tubing	
DRAWN BY: <b>Frank Lombardi 4-19-05</b>	DATE:	SIZE: <b>B</b> SCALE: <b>NTS</b>	DRAWING NUMBER: <b>1006296</b>
Engineer/Manager: <b>Rick Cairns</b>		© 2005 VALUE PLASTICS, INC.	REV. <b>A</b> SHEET: 1 OF 1

**FOR REFERENCE ONLY**