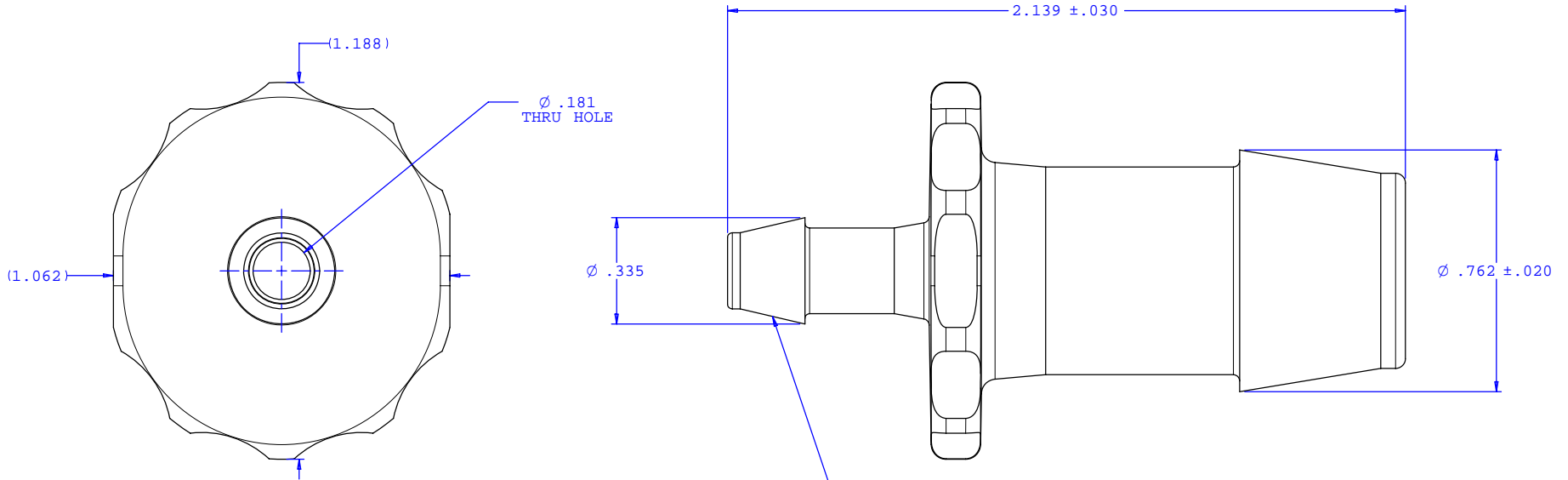
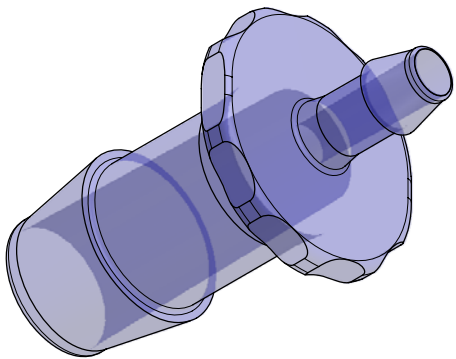


NOTE: FOR MORE DETAILS SEE YOUR V.P.CUSTOMER SERVICE REP.

REVISIONS			
REV.	DESCRIPTION	DATE	APPROVED
A	INITIAL RELEASE	04-22-05	RICK C.



2X INSTRUMENT QUALITY PART. NO PARTING LINE PERMITTED ON THIS CONICAL SURFACE



UNLESS OTHERWISE SPECIFIED DIMENSIONS ARE IN INCHES TOLERANCES ARE:		VALUE PLASTICS, INC.	
FRACTIONS ±	DECIMALS .XX ±.01 .XXX ±.005 .XXXX ±.001	ANGULAR ±1°	PART NUMBER: N690/655
DO NOT SCALE DRAWING		DESCRIPTION: Straight Through Reduction Connector With 600 Series Barbs, 5/8" (16 mm) and 1/4" (6.25 mm) ID Tubing	
DRAWN BY: Frank Lombardi	DATE: 4-19-05	SIZE: B SCALE: NTS	DRAWING NUMBER: 1006343 REV. A
Engineer/Manager: Rick Cairns		© 2005 VALUE PLASTICS, INC. SHEET: 1 OF 1	

FOR REFERENCE ONLY