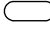
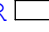
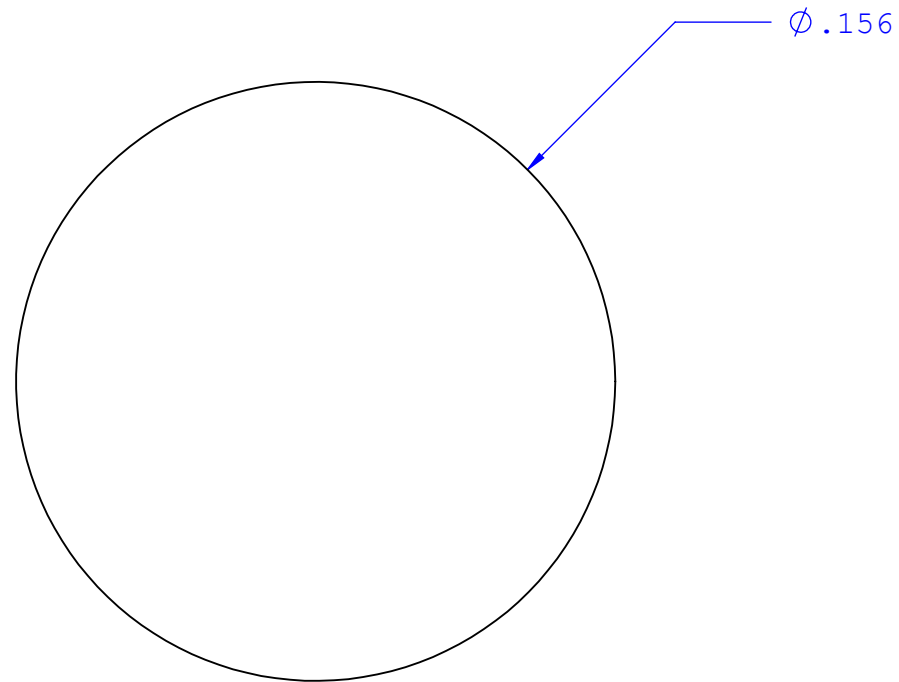


NOTES: FOR MORE DETAILED DRAWING SEE V.P.TOOLING STANDARDS  
 DIMENSIONS MARKED  OR  ARE CONTROL DIMENSIONS

REVISIONS			
REV.	DESCRIPTION	DATE	APPROVED
A	INITIAL RELEASE	4/17/08	

Material-Buna-N Rubber



UNLESS OTHERWISE SPECIFIED DIMENSIONS ARE IN INCHES TOLERANCES ARE:		<b>VALUE PLASTICS, INC</b>			
FRACTIONS    DECIMAL    ANGULAR ±            .XX ±.01    ± 1° .XXX ±.005 .XXXX ±.001		PART NUMBER: <b>RB01</b>			
DO NOT SCALE DRAWING		DESCRIPTION: <b>Check Valve Ball 5/32" Diameter</b>			
DRAWN BY: <b>randy.sakurada</b>	DATE: <b>5/30/2008</b>	SIZE: <b>B</b>	SCALE: <b>NTS</b>	VER:	DWG. NO. <b>1013150</b>
ENGINEERING MGR: <b>R. Cairns</b>		© 2008 VALUE PLASTICS, INC			REV <b>A</b>
				SHEET:	<b>1 OF 1</b>

**FOR REFERENCE ONLY**