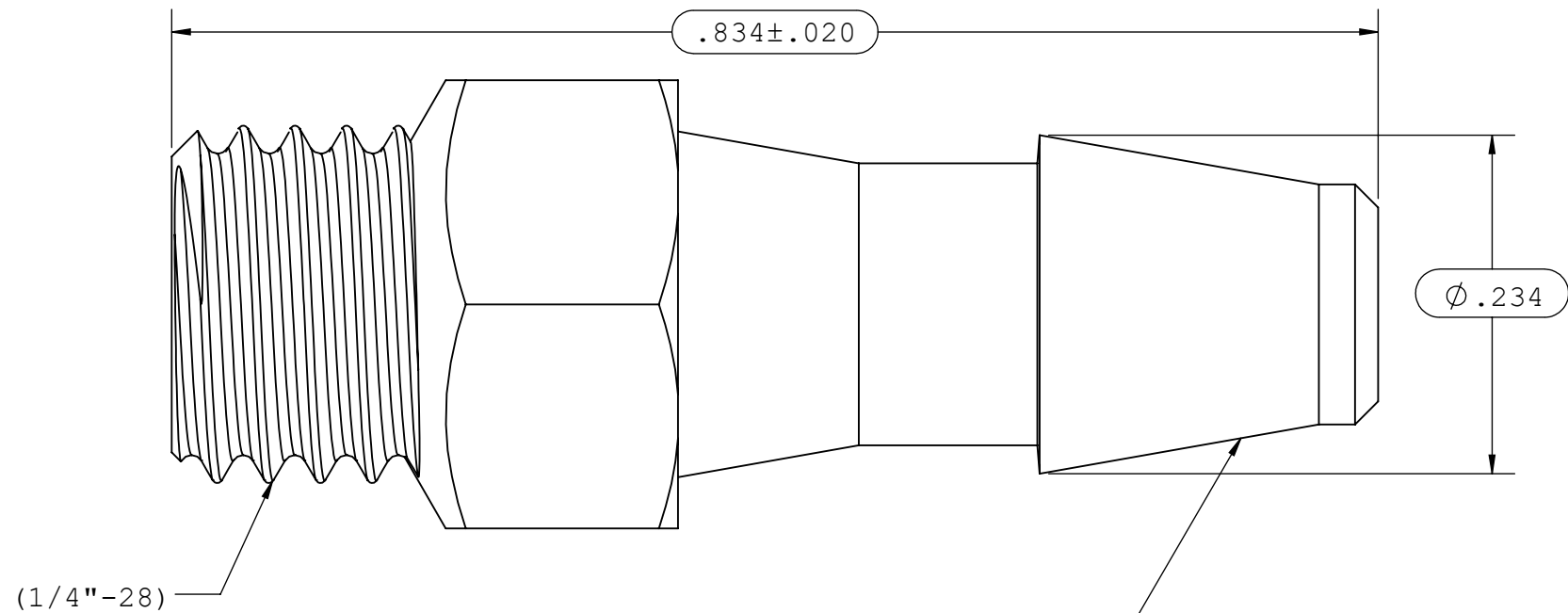
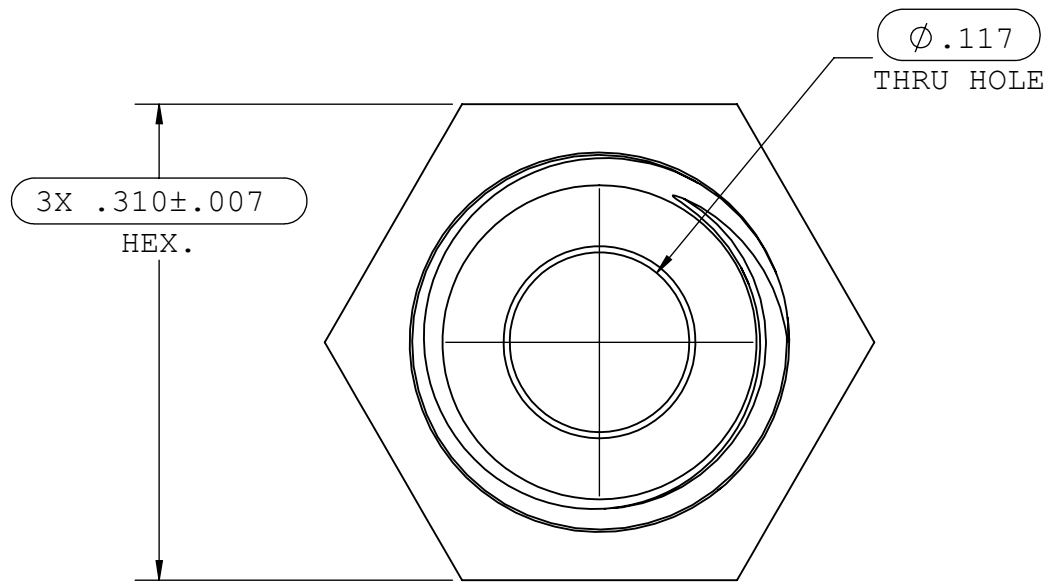
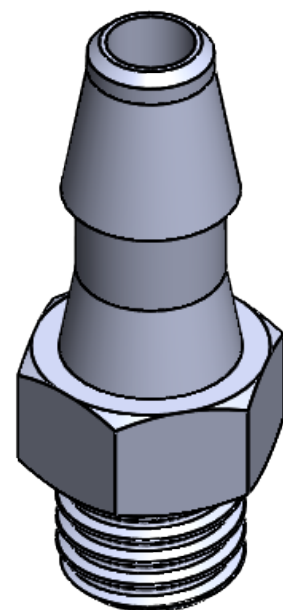


NOTES: 1.FOR ADDITIONAL DETAILS, PLEASE CONTACT VP NEW PRODUCT DEVELOPMENT  
 2.DIMENSIONS MARKED  $\ominus$  ARE CONTROL DIMENSIONS  
 3.VERIFY THREAD USING CG118 1/4"-28 FUNCTIONAL THREAD GAUGE

REVISIONS			
REV.	DESCRIPTION	DATE	APPROVED
A	INITIAL RELEASE	08-22-02	
B	CO 031 DRAFTING UPDATE	01-17-06	RICK C.
C	ECO 358	03-20-17	FJL
D	ECO 1079196	01-31-20	FJL



INSTRUMENT QUALITY PART. NO PARTING LINE PERMITTED ON THIS CONICAL SURFACE



UNLESS OTHERWISE SPECIFIED DIMENSIONS ARE IN INCHES TOLERANCES ARE:		<b>VALUE PLASTICS, INC</b>			
FRACTIONS	DECIMAL				
±	.XX ±.01	± 1°			
	.XXX ±.005				
	.XXXX ±.001				
DO NOT SCALE DRAWING		PART NUMBER: S240			
		DESCRIPTION: 1/4"-20 THREAD WITH 5/16" HEX TO 200 SERIES BARB, 5/32" (4 mm) ID TUBING			
DRAWN BY: BRYCE HIRSCHFELD	DATE: 1/31/2020	SIZE: <b>B</b>	SCALE: NTS	VER:	DWG. NO. 1007773
MANAGER: DOUG KIMMEL		© 2014 VALUE PLASTICS, INC			REV D
				SHEET: 1 OF 1	

**FOR REFERENCE ONLY**