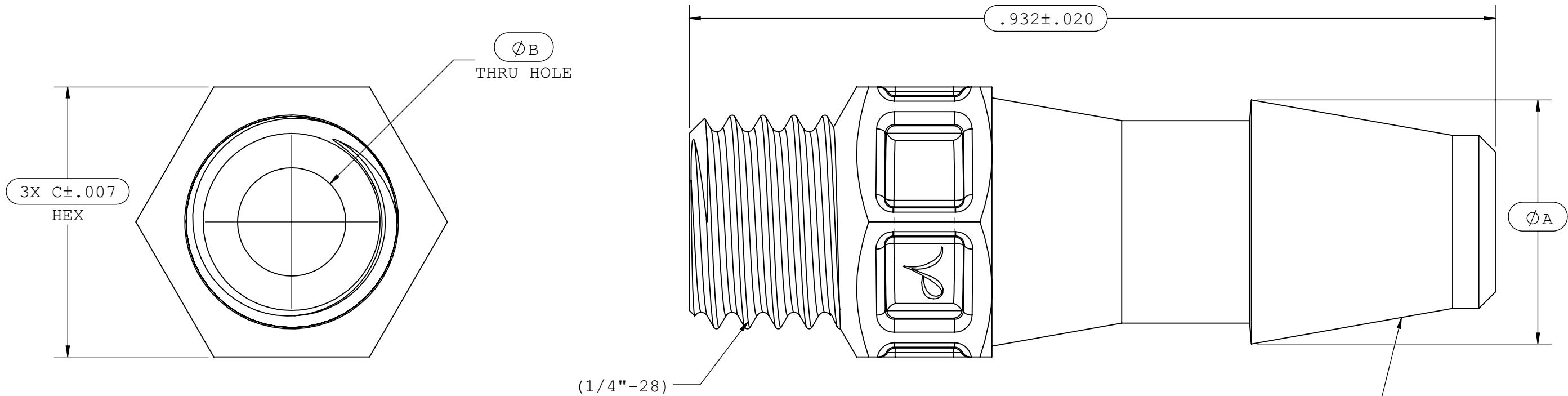


NOTES: 1.FOR ADDITIONAL DETAILS, PLEASE CONTACT VP NEW PRODUCT DEVELOPMENT

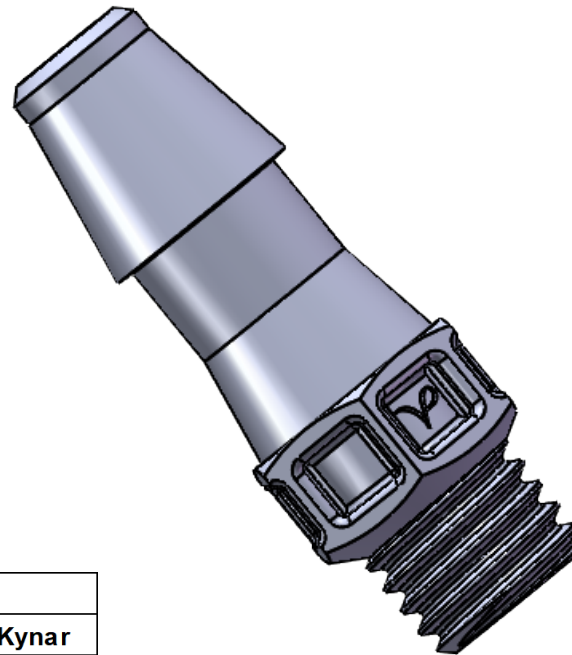
2.DIMENSIONS MARKED \varnothing ARE CONTROL DIMENSIONS

3.VERIFY THREAD USING CG 118 1/4"-28 FUNCTIONAL THREAD GAUGE

| REVISIONS | | | |
|-----------|------------------------|----------|----------|
| REV. | DESCRIPTION | DATE | APPROVED |
| A | INITIAL RELEASE | 06-11-98 | |
| B | CO 018 DRAFTING UPDATE | 08-18-05 | Rick C. |
| C | ECO 285 ECO 358 | 02-08-17 | FJL |
| D | ECO 1079196 | 01-31-20 | FJL |



INSTRUMENT QUALITY PART.
NO PARTING LINE PERMITTED
ON THIS CONICAL SURFACE.



| Dimension | Material Specific Tolerances | | | | | | | |
|-----------|------------------------------|-------|------|------|------|------|-------------|-------|
| | Acetal | Nylon | PP | ABS | PC | PVC | Polysulfone | Kynar |
| A | .282 | .275 | .277 | .282 | .282 | .282 | .282 | .271 |
| B | .125 | .121 | .125 | .125 | .125 | .125 | .125 | .121 |
| C | .310 | .310 | .310 | .310 | .310 | .310 | .310 | .307 |
| D | | | | | | | | |
| E | | | | | | | | |
| F | | | | | | | | |

| | | | | | |
|---|--------------------|---|---------------|----------|---------------------------------|
| UNLESS OTHERWISE SPECIFIED DIMENSIONS ARE IN INCHES TOLERANCES ARE: | | VALUE PLASTICS, INC | | | |
| FRACTIONS DECIMAL ANGULAR ± .XX ±.01 ± 1° .XXX ±.005 .XXXX ±.001 | | PART NUMBER: S250 | | | |
| DO NOT SCALE DRAWING | | DESCRIPTION: 1/4-28 Thread with 5/16" Hex to 200 Series Barb, 3/16" (4.8 mm) ID Tubing | | | |
| DRAWN BY: shannond | DATE: 1/31/2020 | SIZE: B | SCALE: NTS | VER: | DWG. NO. REV 1006895 D |
| MANAGER: huadong.lou | | © 2011 VALUE PLASTICS, INC | | | SHEET: 1 OF 1 |

FOR REFERENCE ONLY