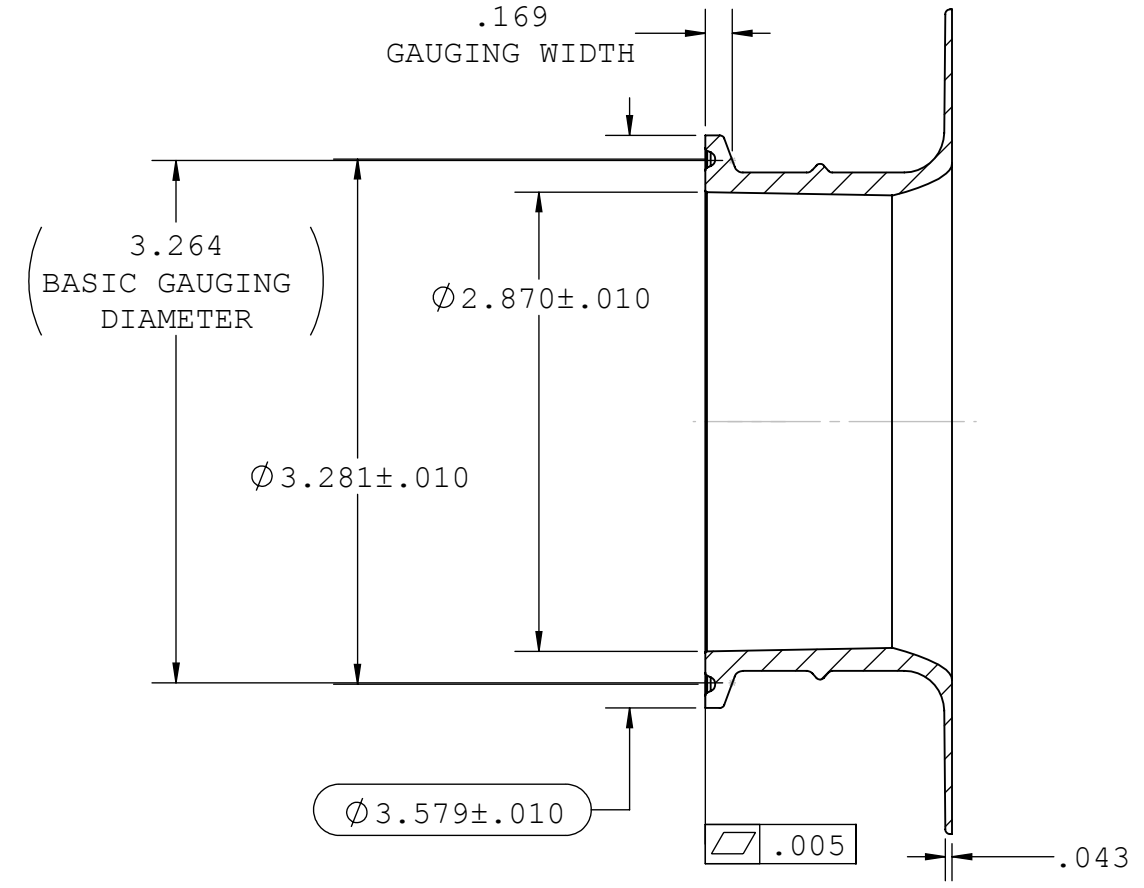
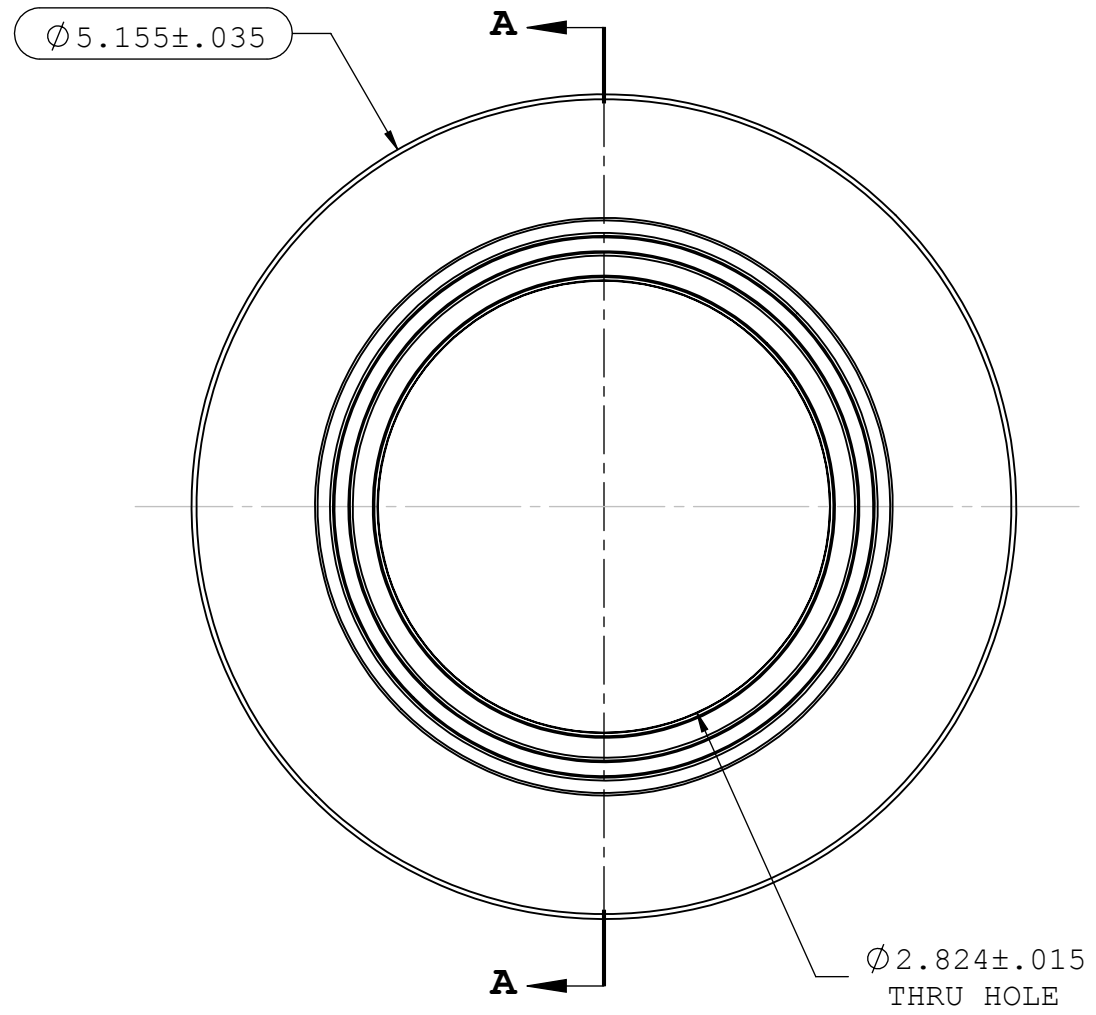


- NOTES:
1. FOR ADDITIONAL DETAILS, PLEASE CONTACT VP PRODUCT DEVELOPMENT
 2. DIMENSIONS MARKED ARE CONTROL DIMENSIONS
 3. ALL EXTERIOR SURFACES HAVE A MAXIMUM OF 20 Ra MICROINCH SURFACE FINISH.
 4. ALL INTERIOR SURFACES HAVE A MAXIMUM OF 15 Ra MICROINCH SURFACE FINISH.
 5. VALUE PLASTICS SFMX SERIES FERRULES ARE DESIGNED TO COMPLY WITH ASME BPE-2014 TABLE DT-7-1 HYGIENIC CLAMP FERRULE STANDARD DIMENSIONS & TOLERANCES; DT-9.3-1 HYGIENIC CLAMP FERRULE: DESIGN CRITERIA. REF PM-4.6.1.2. PERFORMANCE NOTE.
 6. ALL INTERIOR AND EXTERIOR SURFACE FINISHES COMPLY WITH ASME BPE-2016 TABLE SF-3.4-1 SFP2 Ra Readings for Polymeric Product Contact Surfaces
 7. ID FLASH NOT TO EXCEED .003". EXTERIOR PARTING LINE FLASH NOT TO EXCEED .005".
 8. USE GAGE CG088 TO MEASURE GASKET GROOVE DIMENSIONS

REVISIONS			
REV.	DESCRIPTION	DATE	APPROVED
A	INITIAL RELEASE	12-23-13	S.N.R
B	ECO 310	5-13-15	H.L
C	ECO 369	02-26-18	FJL



SECTION A-A

UNLESS OTHERWISE SPECIFIED DIMENSIONS ARE IN INCHES TOLERANCES ARE:		VALUE PLASTICS, INC			
FRACTIONS DECIMAL ANGULAR \pm .XX \pm .01 \pm 1° .XXX \pm .005 .XXXX \pm .001		PART NUMBER: SFBPF3			
DO NOT SCALE DRAWING		DESCRIPTION: Bag Port Flange to 3" Tri-Clamp Connection			
DRAWN BY: Pete L.	DATE: 2/26/2018	SIZE: B	SCALE: NTS	VER:	DWG. NO. 1026906
MANAGER: Ravi Narayanan		© 2011 VALUE PLASTICS, INC			REV C
					SHEET: 1 OF 1

FOR REFERENCE ONLY