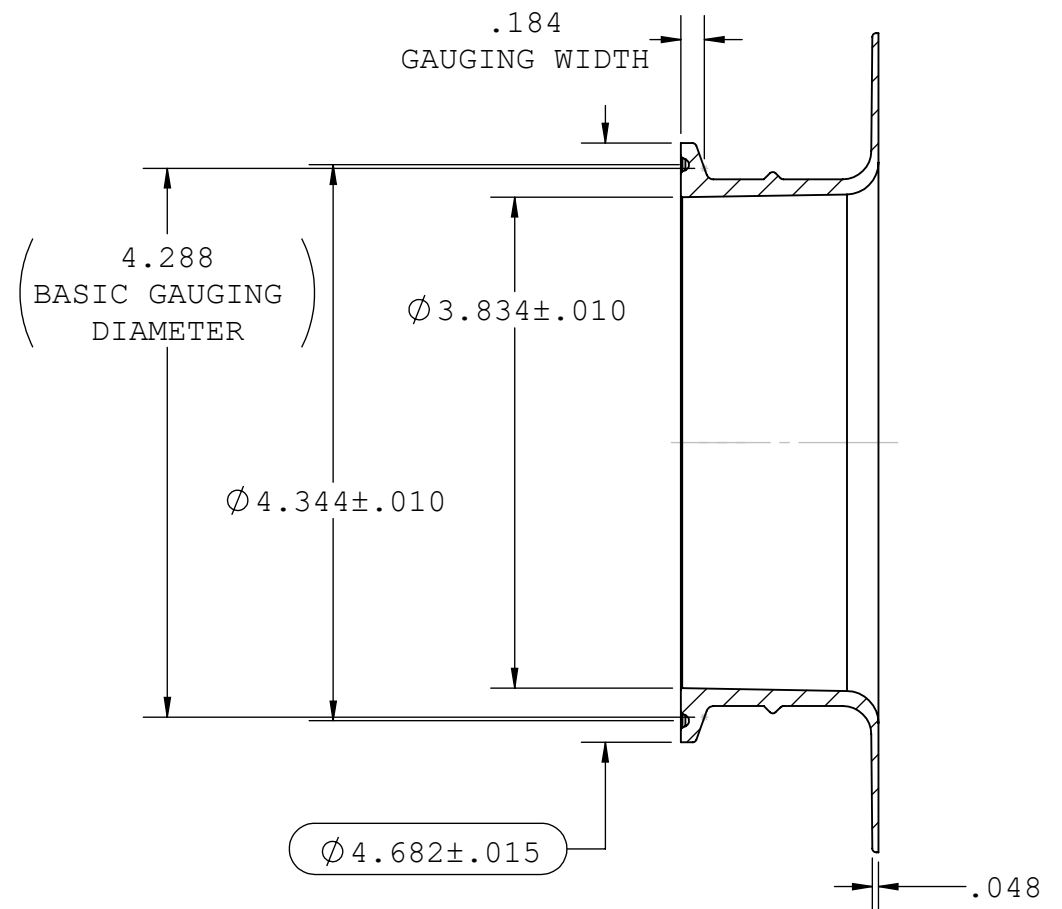
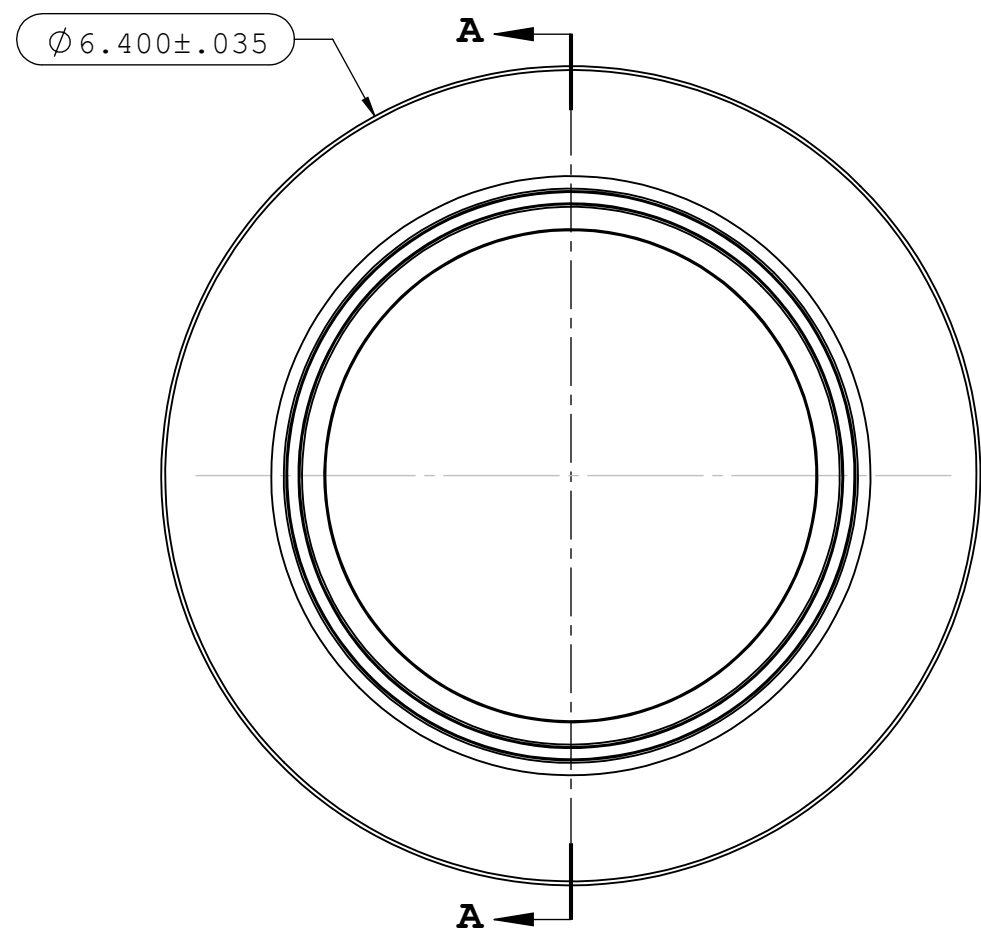


- NOTES:
1. FOR ADDITIONAL DETAILS, PLEASE CONTACT VP PRODUCT DEVELOPMENT
 2. DIMENSIONS MARKED ARE CONTROL DIMENSIONS
 3. ALL EXTERIOR SURFACES HAVE A MAXIMUM OF 20 Ra MICROINCH SURFACE FINISH.
 4. ALL INTERIOR SURFACES HAVE A MAXIMUM OF 15 Ra MICROINCH SURFACE FINISH.
 5. VALUE PLASTICS SFMX SERIES FERRULES ARE DESIGNED TO COMPLY WITH ASME BPE-2014 TABLE DT-7-1 HYGIENIC CLAMP FERRULE STANDARD DIMENSIONS & TOLERANCES; DT-9.3-1 HYGIENIC CLAMP FERRULE: DESIGN CRITERIA. REF PM-4.6.1.2. PERFORMANCE NOTE.
 6. ALL INTERIOR AND EXTERIOR SURFACE FINISHES COMPLY WITH ASME BPE-2016 TABLE SF-3.4-1 SFP2 Ra Readings for Polymeric Product Contact Surfaces
 7. ID FLASH NOT TO EXCEED .003". EXTERIOR PARTING LINE FLASH NOT TO EXCEED .005".

| REVISIONS | | | |
|-----------|-----------------|----------|----------|
| REV. | DESCRIPTION | DATE | APPROVED |
| A | INITIAL RELEASE | 10-02-19 | FJL |



SECTION A-A

| | | | | | |
|--|--------------------|---|---------------|------|---------------------|
| UNLESS OTHERWISE SPECIFIED DIMENSIONS ARE IN INCHES TOLERANCES ARE: | | VALUE PLASTICS, INC | | | |
| FRACTIONS DECIMAL ANGULAR \pm .XX \pm .01 \pm 1° .XXX \pm .005 .XXXX \pm .001 | | PART NUMBER: SFBPF4 | | | |
| DO NOT SCALE DRAWING | | DESCRIPTION: Bag Port Flange to 4" Tri-Clamp Connection | | | |
| DRAWN BY: Frank.Lombardi | DATE: 10/2/2019 | SIZE: B | SCALE: NTS | VER: | DWG. NO. 1090731 |
| MANAGER: Ravi Narayanan | | © 2011 VALUE PLASTICS, INC | | | REV A |
| | | | | | SHEET: 1 OF 1 |

FOR REFERENCE ONLY