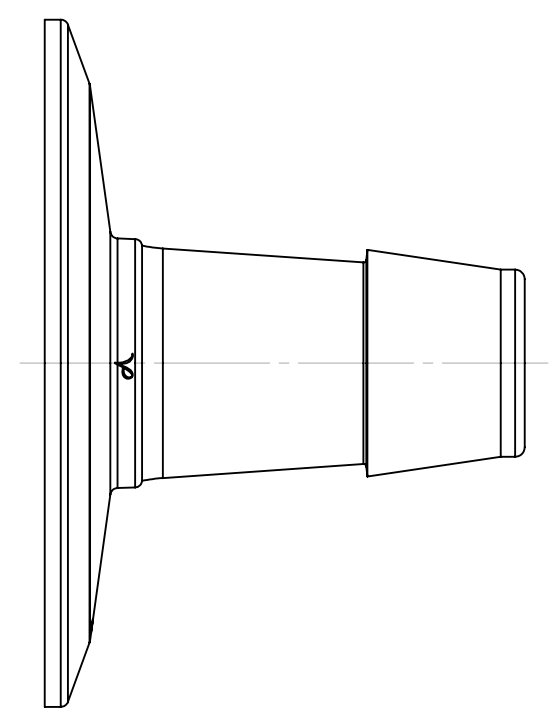
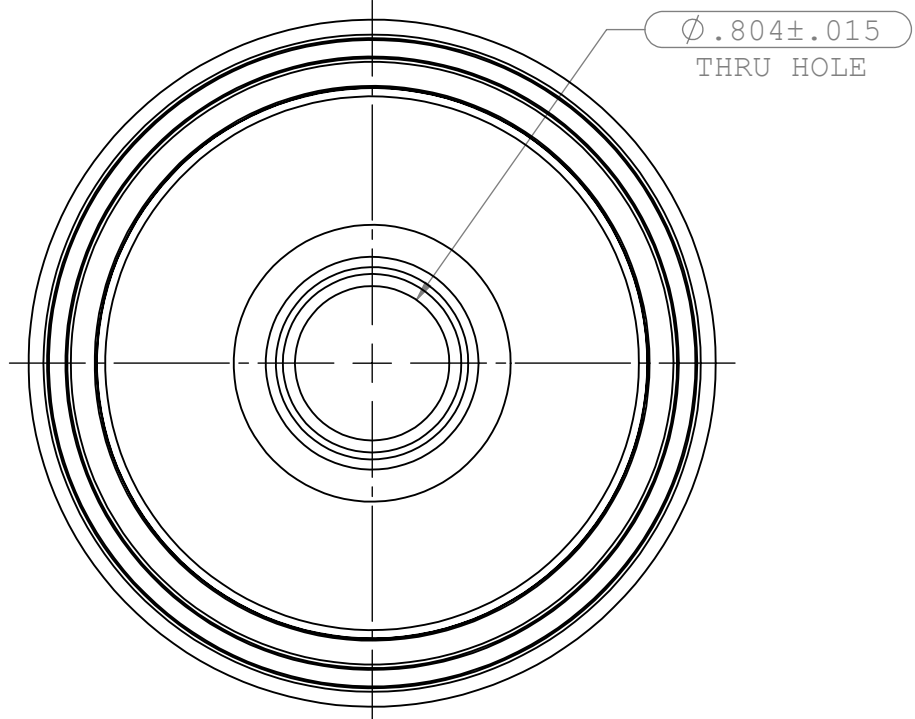
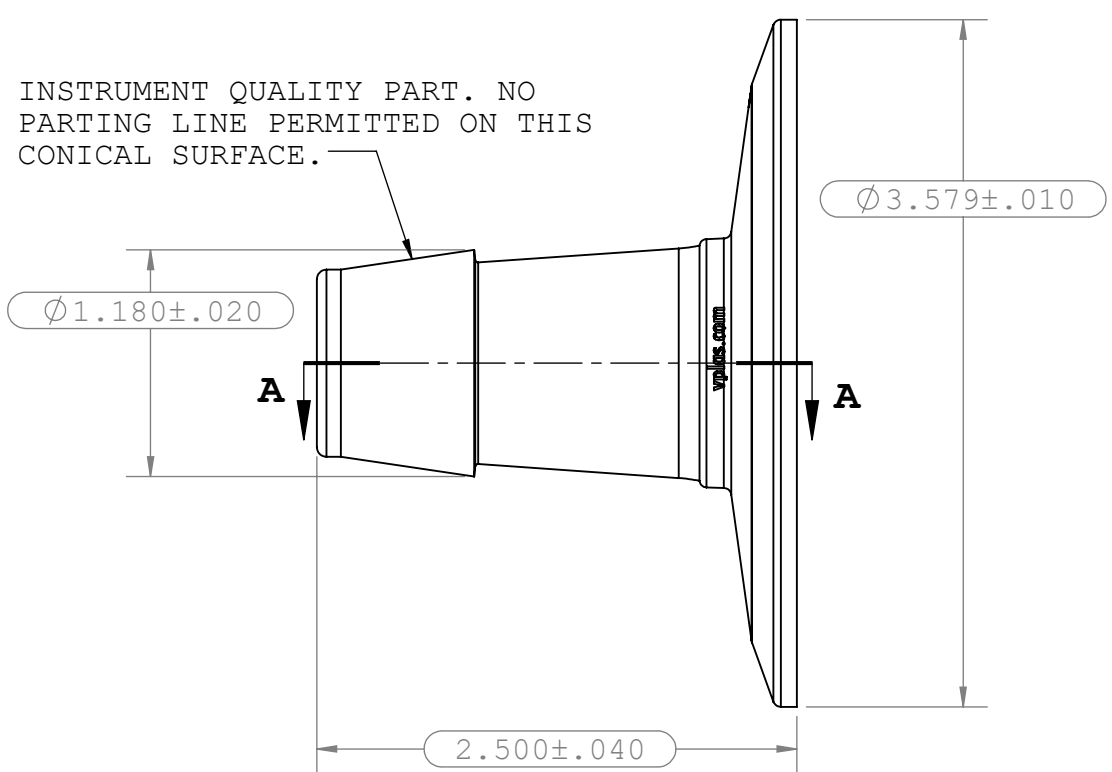


REVISIONS			
REV.	DESCRIPTION	DATE	APPROVED
A	INITIAL RELEASE	12-09-22	FJL

INSTRUMENT QUALITY PART. NO PARTING LINE PERMITTED ON THIS CONICAL SURFACE.



- NOTES:
- FOR ADDITIONAL DETAILS, PLEASE CONTACT VP PRODUCT DEVELOPMENT
  - DIMENSIONS MARKED      ARE CONTROL DIMENSIONS
  - ALL EXTERIOR SURFACES HAVE A MAXIMUM OF 20 RA MICROINCH SURFACE FINISH
  - ALL INTERIOR SURFACES HAVE A MAXIMUM OF 15 RA MICROINCH SURFACE FINISH
  - VALUE PLASTICS SFMX SERIES FERRULES ARE DESIGNED TO COMPLY WITH ASME BPE-2022 TABLE DT-7.1-2 HYGIENIC CLAMP FERRULE STANDARD DIMENSIONS & TOLERANCES; DT-9.3-1 HYGIENIC CLAMP FERRULE: DESIGN CRITERIA.
  - ALL INTERIOR AND EXTERIOR SURFACE FINISHES COMPLY WITH ASME BPE-2022 TABLE SF-3.4-1 SFP2 RA READINGS FOR POLYMERIC PRODUCT CONTACT SURFACES

UNLESS OTHERWISE SPECIFIED DIMENSIONS ARE IN INCHES TOLERANCES ARE:		<b>VALUE PLASTICS, INC</b>			
FRACTIONS    DECIMAL    ANGULAR ±                .XX ±.01        ± 1° .XXX ±.005 .XXXX ±.001		PART NUMBER: SFM3X6110			
DO NOT SCALE DRAWING		DESCRIPTION: Sanitary Fitting, 3" Maxi Flange to 600 Series Barb, 1" (25.4 mm) Tubing ID			
DRAWN BY: Andrew.Watts	DATE: 1/5/2023	SIZE: <b>B</b>	SCALE: NTS	VER: 1350196	DWG. NO. 1350196
NEW PRODUCT DEVELOPMENT MGR: Frank.Lombardi		© 2014 VALUE PLASTICS, INC			REV A
				SHEET:	1 OF 1

**FOR REFERENCE ONLY**