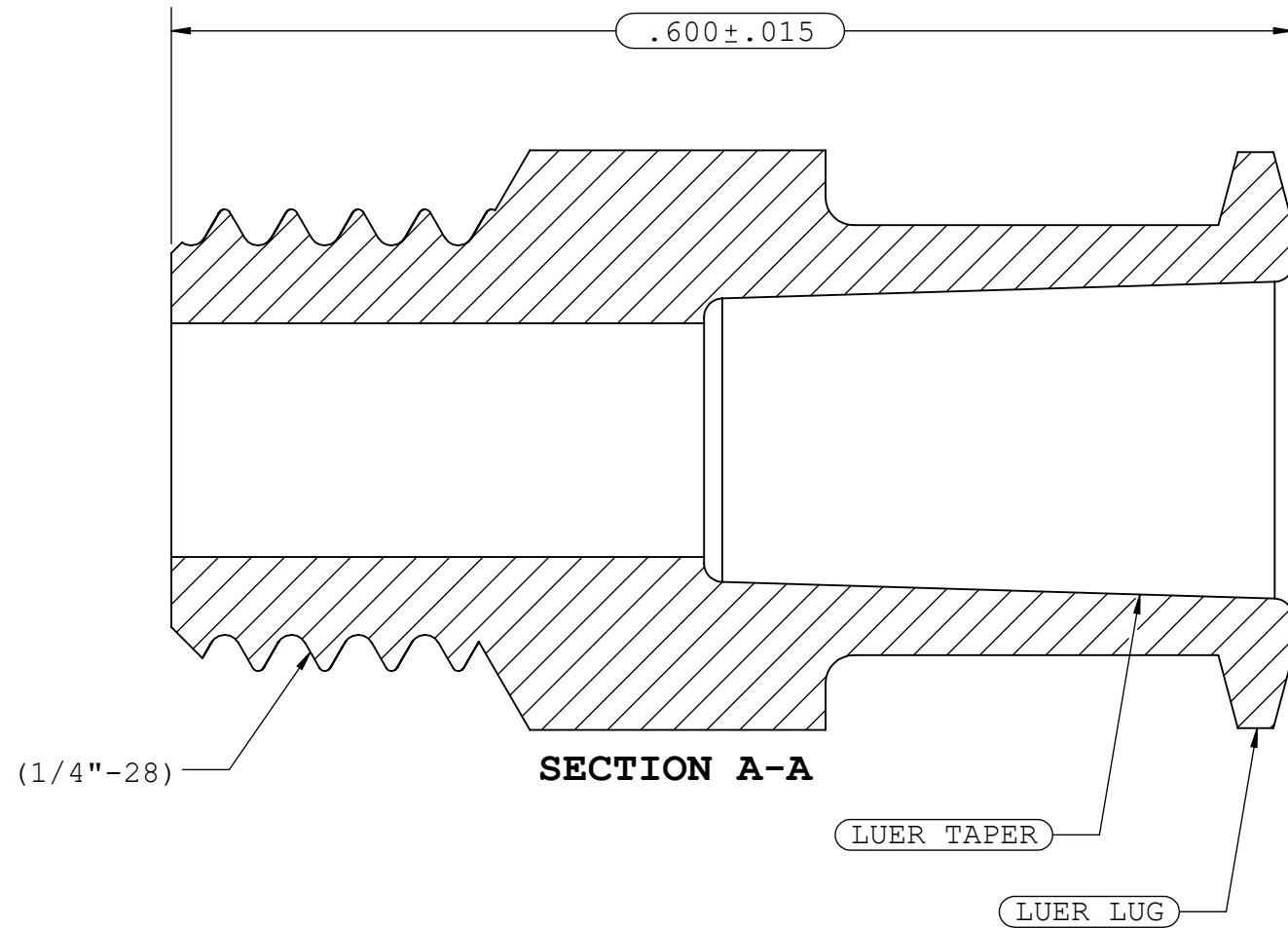
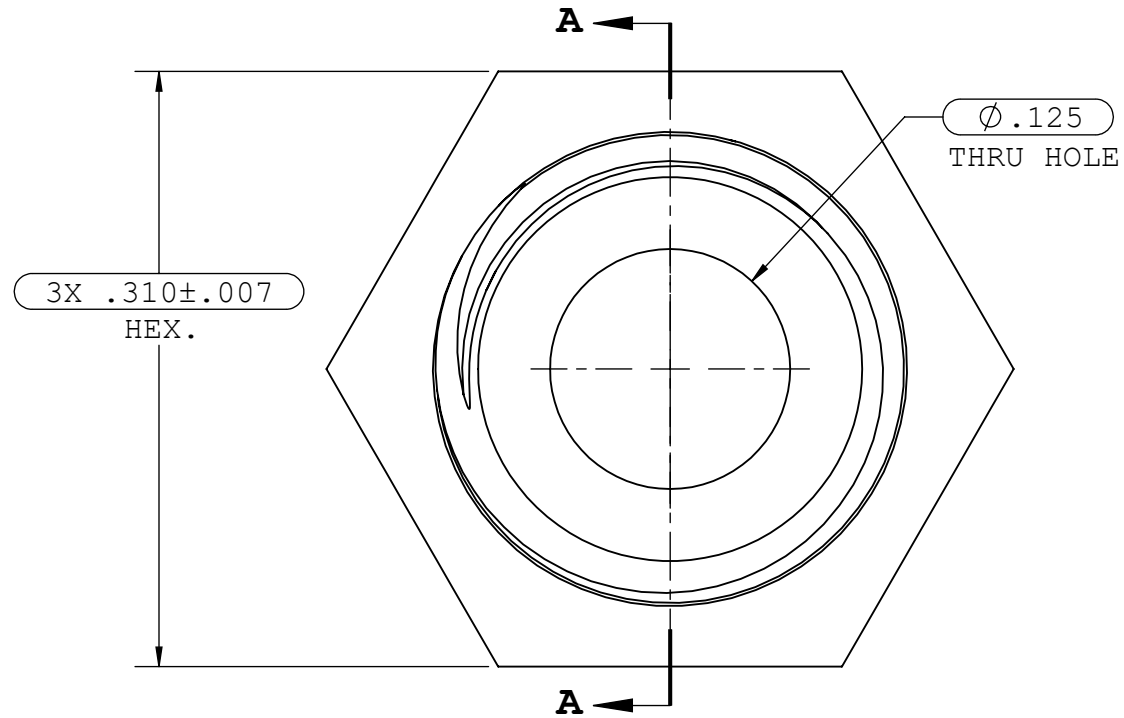


NOTES: 1.FOR ADDITIONAL DETAILS, PLEASE CONTACT VP NEW PRODUCT DEVELOPMENT
 2.DIMENSIONS MARKED ϕ ARE CONTROL DIMENSIONS
 3.VERIFY THREAD USING CG118 1/4"-28 FUNCTIONAL THREAD GAUGE

REVISIONS			
REV.	DESCRIPTION	DATE	APPROVED
A	INITIAL RELEASE	02-16-98	
B	CO 031 Drafting Update	01-17-06	Rick C.
C	ECO 148- Re-design Hex w/ coring changes	12-29-09	Rick C.
D	ECO 358	03-21-17	FJL
E	ECO 1079196	01-31-20	FJL



UNLESS OTHERWISE SPECIFIED DIMENSIONS ARE IN INCHES TOLERANCES ARE:		VALUE PLASTICS, INC			
FRACTIONS	DECIMAL				
$\pm .XX$	$\pm .01$	$\pm 1^\circ$	DESCRIPTION:	FEMALE LUER LUG STYLE WITH 5/16" HEX TO 1/4-28 THREAD	
$\pm .XXX$	$\pm .005$		SIZE:	B	
$\pm .XXXX$	$\pm .001$		SCALE:	NTS	
DO NOT SCALE DRAWING		VER:	DWG. NO.	1007764	
DRAWN BY:	DATE:	REV:		E	
MICHELE SCHENK	1/31/2020				
ENGINEERING MGR:		© 2009 VALUE PLASTICS, INC		SHEET: 1 OF 1	
R. Cairns					

FOR REFERENCE ONLY