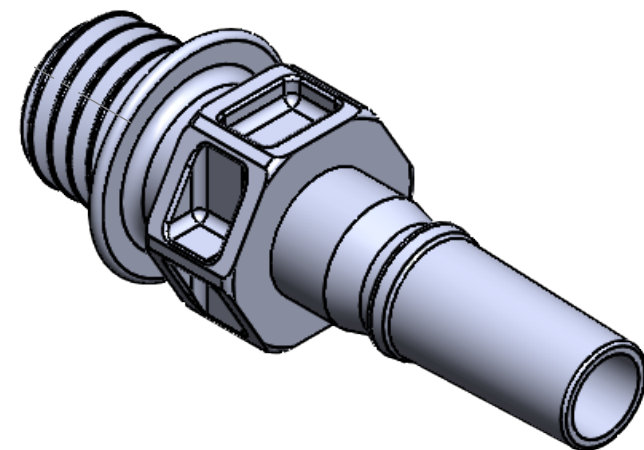
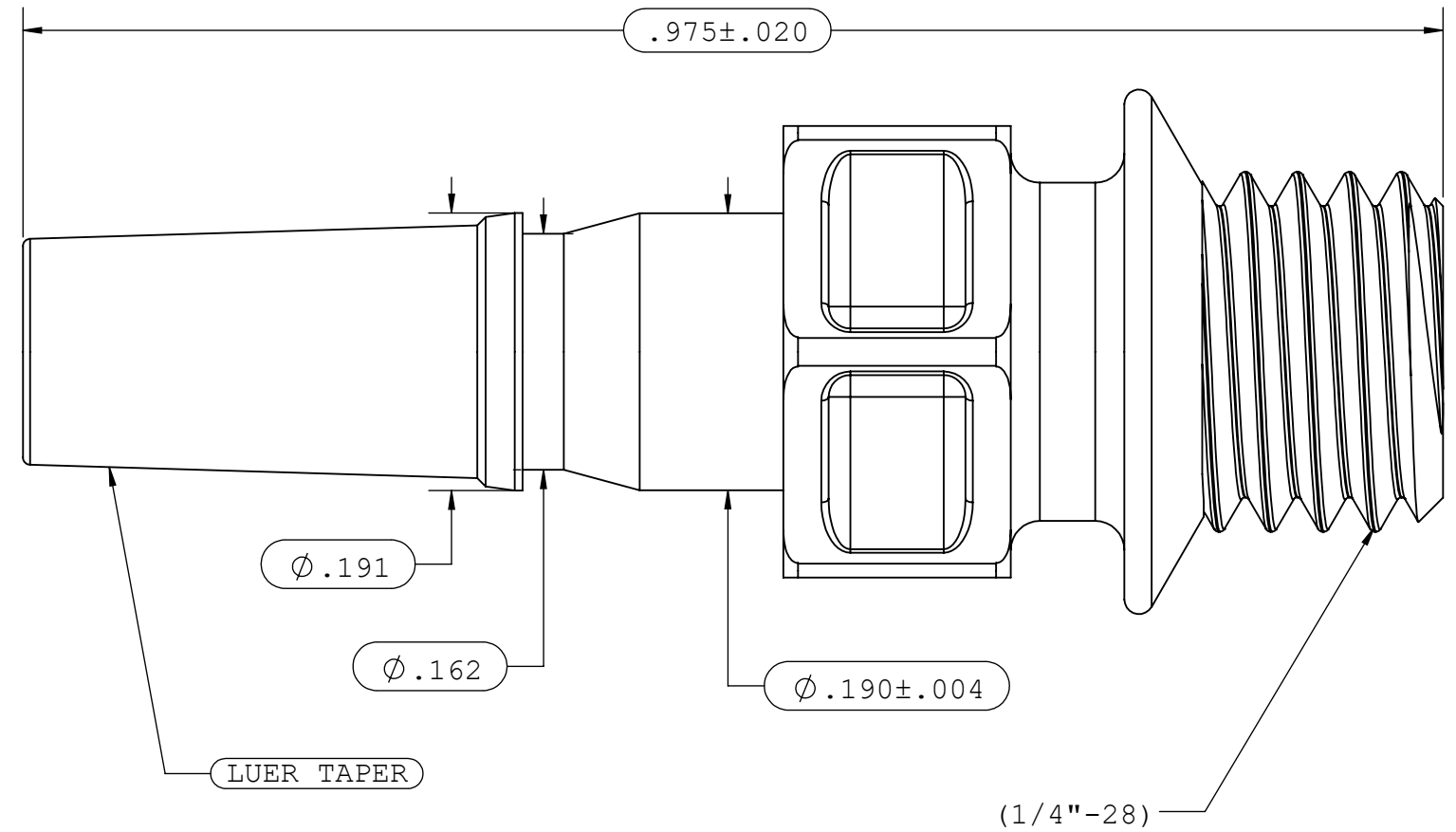
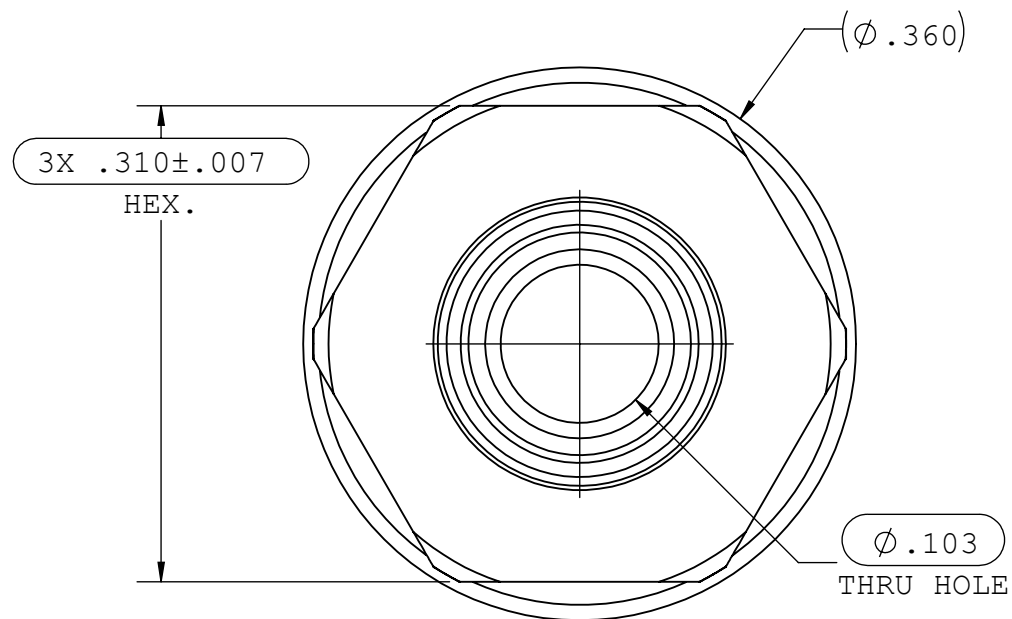


NOTES: 1.FOR ADDITIONAL DETAILS, PLEASE CONTACT VP NEW PRODUCT DEVELOPMENT
 2.DIMENSIONS MARKED \square ARE CONTROL DIMENSIONS
 3.VERIFY THREAD USING CG118 1/4"-28 FUNCTIONAL THREAD GAUGE

REVISIONS			
REV.	DESCRIPTION	DATE	APPROVED
A	INITIAL RELEASE	08-27-97	
B	CO 027 DRAFTING UPDATE	01-17-06	RICK C.
C	ECO 358	03-20-17	FJL
D	ECO 1079196	01-31-20	FJL



UNLESS OTHERWISE SPECIFIED DIMENSIONS ARE IN INCHES TOLERANCES ARE:		VALUE PLASTICS, INC			
FRACTIONS DECIMAL ANGULAR ± .XX ± .01 ± 1° .XXX ± .005 .XXXX ± .001		PART NUMBER: SMLRL			
DO NOT SCALE DRAWING		DESCRIPTION: MALE LUER WITH 5/16" HEX TO 1/4"-28 THREAD (MAY BE USED WITH SEPARATE ROTATING LOCK RING; FSLLR)			
DRAWN BY: BRYCE HIRSCHFELD	DATE: 1/31/2020	SIZE: B	SCALE: NTS	VER: 	DWG. NO. REV 1007708 D
MANAGER: LOU HUADONG		© 2014 VALUE PLASTICS, INC			SHEET: 1 OF 1

FOR REFERENCE ONLY