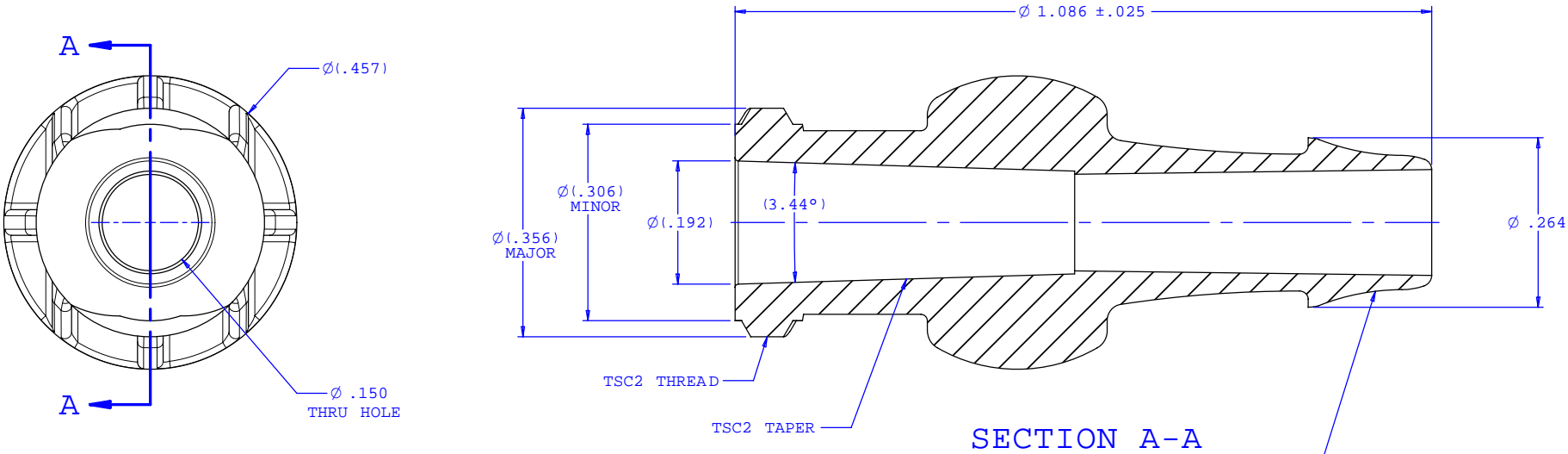
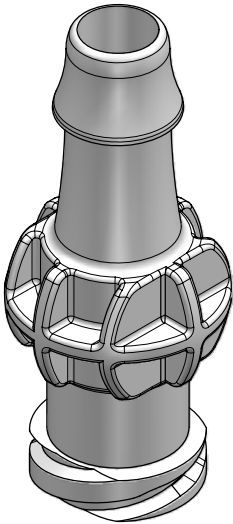


NOTE: FOR MORE DETAILS SEE YOUR V.P.CUSTOMER SERVICE REP.
NOTE: CUSTOM GAGES ARE USED TO VERIFY TSC2 TAPER AND TSC2 THREAD

REVISIONS			
REV.	DESCRIPTION	DATE	APPROVED
A	INITIAL RELEASE	10-05-06	Rick C.



INSTRUMENT QUALITY PART. NO
PARTING LINE PERMITTED ON
THIS CONICAL SURFACE



UNLESS OTHERWISE SPECIFIED DIMENSIONS ARE IN INCHES TOLERANCES ARE:		VALUE PLASTICS, INC.		
FRACTIONS	DECIMALS	ANGULAR	PART NUMBER:	TSC2F035
±	.XX ±.01 .XXX ±.005 .XXXX ±.001	±1°	DESCRIPTION:	Female Thread Style Taper Fitting to 500 Series Barb, 3/16" (4.75 mm) ID Tubing
DO NOT SCALE DRAWING		SIZE:	SCALE:	DRAWING NUMBER:
DRAWN BY: Frank Lombardi		B	NTS	1009608
DATE: 10-05-06		Engineer Manager:	Rick Cairns	REV. A
© 2005 VALUE PLASTICS, INC.			SHEET:	1 OF 1

FOR REFERENCE ONLY