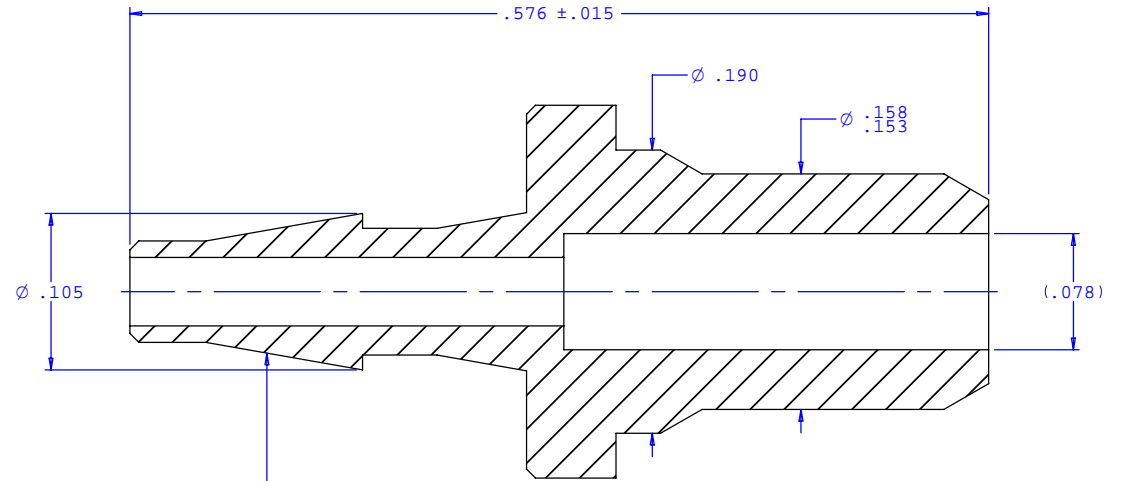
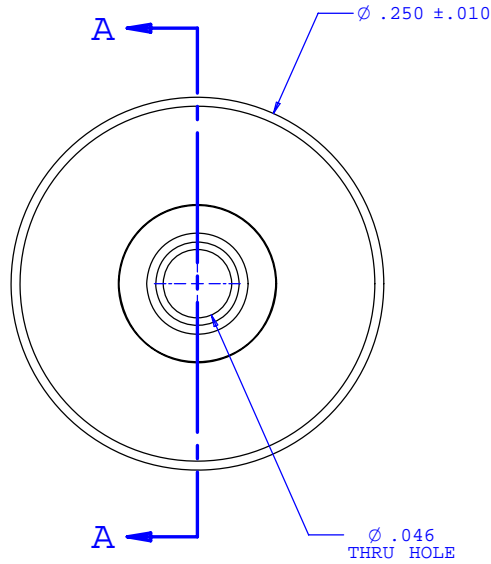


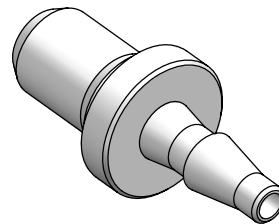
NOTE: FOR MORE DETAILS SEE YOUR V.P.CUSTOMER SERVICE REP.

REVISIONS			
REV.	DESCRIPTION	DATE	APPROVED
A	INITIAL RELEASE	12-30-97	
B	CO 046 DRAFTING UPDATE	07-23-07	Rick C.



SECTION A-A

INSTRUMENT QUALITY PART. NO PARTING LINE ALLOWED ON THIS CONICAL SURFACE.



UNLESS OTHERWISE SPECIFIED DIMENSIONS ARE IN INCHES TOLERANCES ARE:		VALUE PLASTICS, INC.	
FRACTIONS ±	DECIMALS .XX ±.01 .XXX ±.005 .XXXX ±.001	ANGULAR ±1°	PART NUMBER: U10
DO NOT SCALE DRAWING		DESCRIPTION: Ultrasonically Weldable Fitting to Classic Series Barb, 1/16" (1.5 mm) ID Tubing	
DRAWN BY: Randy Sakurada	DATE: 01-22-07	SIZE: B	SCALE: NTS
ENGINEER/ MANAGER: Rick Cairns		DRAWING NUMBER: 1010102	REV. B
		© 2007 VALUE PLASTICS, INC.	SHEET: 1 OF 1

FOR REFERENCE ONLY