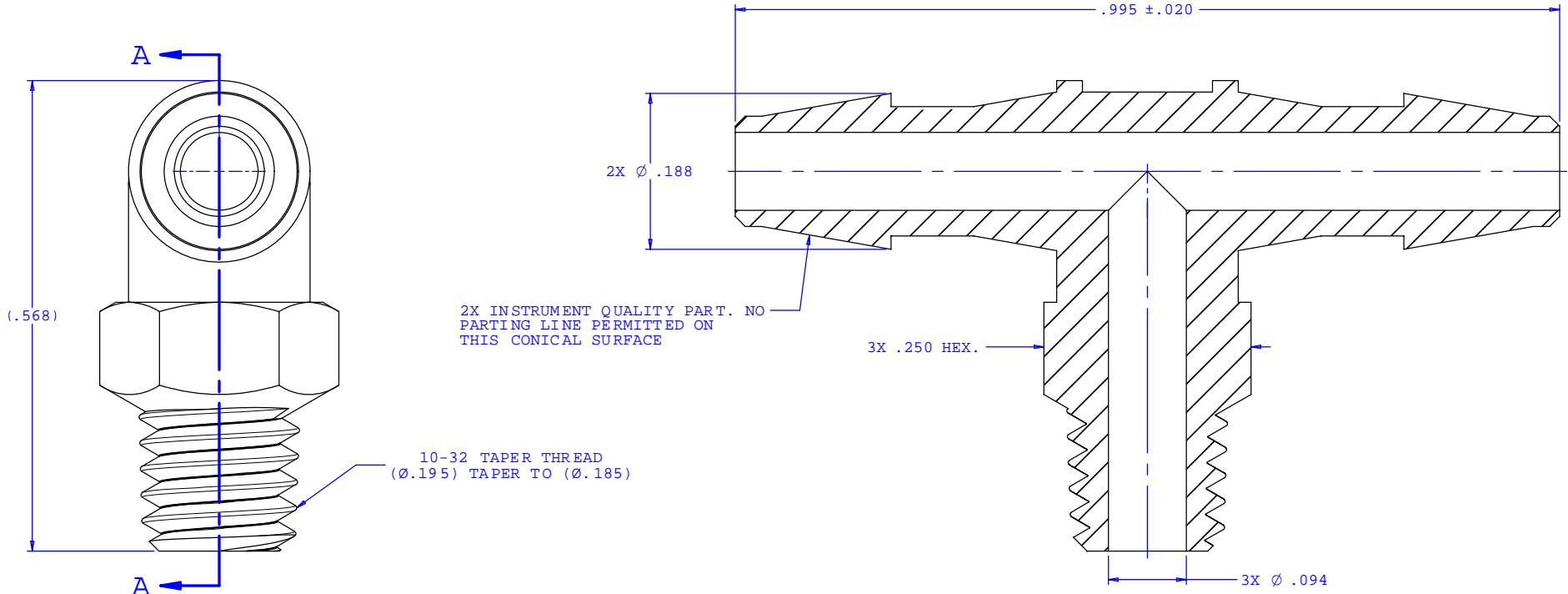


NOTE: FOR MORE DETAILS SEE YOUR V.P. CUSTOMER SERVICE REP.

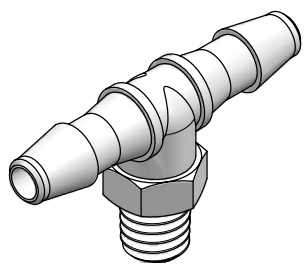
REVISIONS			
REV.	DESCRIPTION	DATE	APPROVED
A	INITIAL RELEASE	06-26-98	
B	CO 031 Drafting Update	02-20-06	Rick C.



2X INSTRUMENT QUALITY PART. NO PARTING LINE PERMITTED ON THIS CONICAL SURFACE

10-32 TAPER THREAD (Ø.195) TAPER TO (Ø.185)

SECTION A-A



UNLESS OTHERWISE SPECIFIED DIMENSIONS ARE IN INCHES TOLERANCES ARE:		<b>VALUE PLASTICS, INC.</b>	
FRACTIONS ±	DECIMALS ±	ANGULAR ±	PART NUMBER: <b>XT230</b>
.XX	±.01	±1°	DESCRIPTION: 10-32 Special Tapered Thread Tee with 1/4" Hex to 200 Series Barb, 1/8" (3 mm) ID Tubing
.XXX	±.005		
.XXXX	±.001		
DO NOT SCALE DRAWING			
DRAWN BY: <b>Frank Lombardi</b>	DATE: <b>09-30-05</b>	SIZE: <b>B</b>	SCALE: <b>NTS</b>
ENGINEER/MANAGER: <b>Rick Cairns</b>		DRAWING NUMBER: <b>1007686</b>	REV. <b>B</b>
© 2005 VALUE PLASTICS, INC.			SHEET: 1 OF 1

**FOR REFERENCE ONLY**