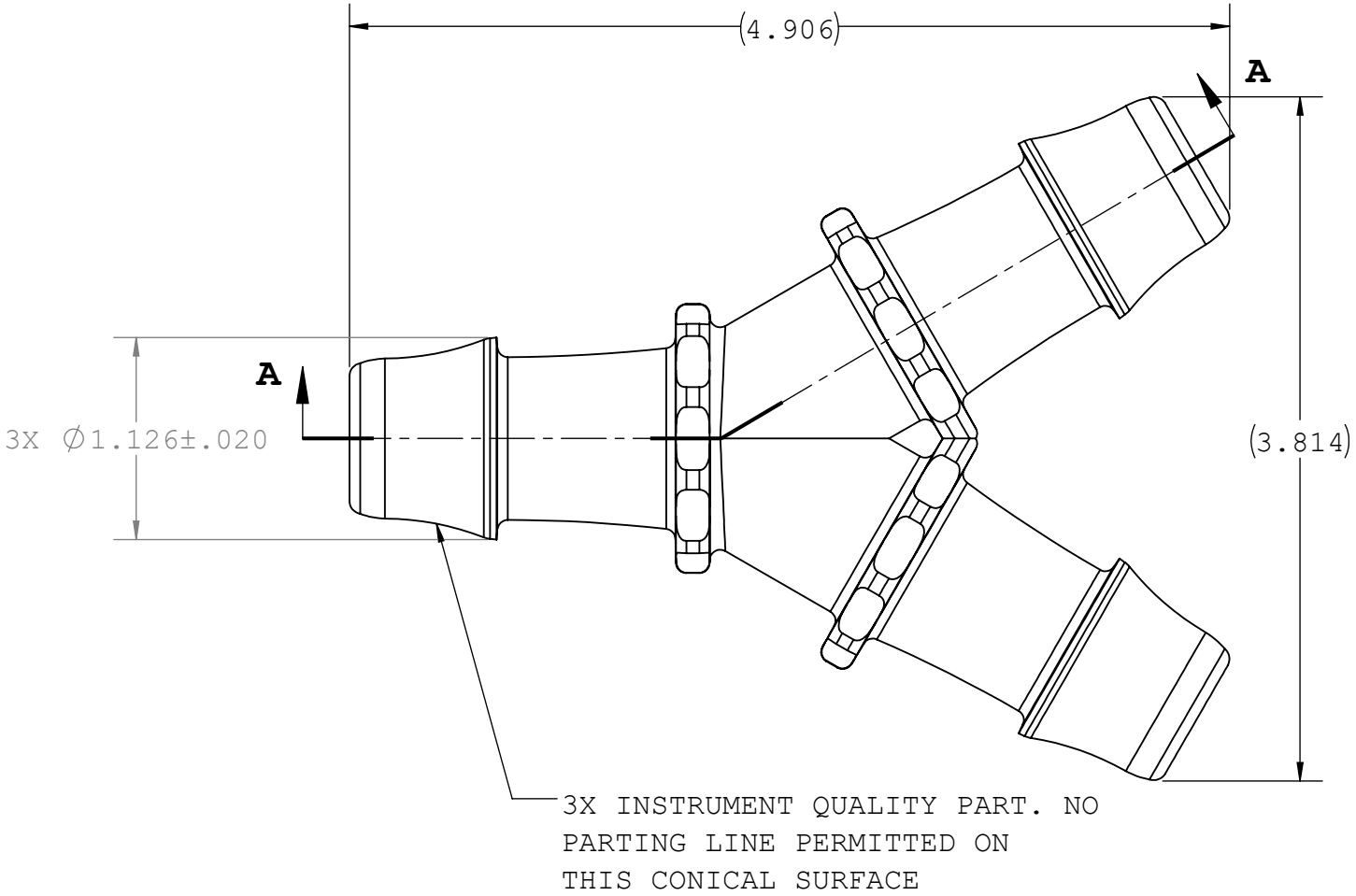
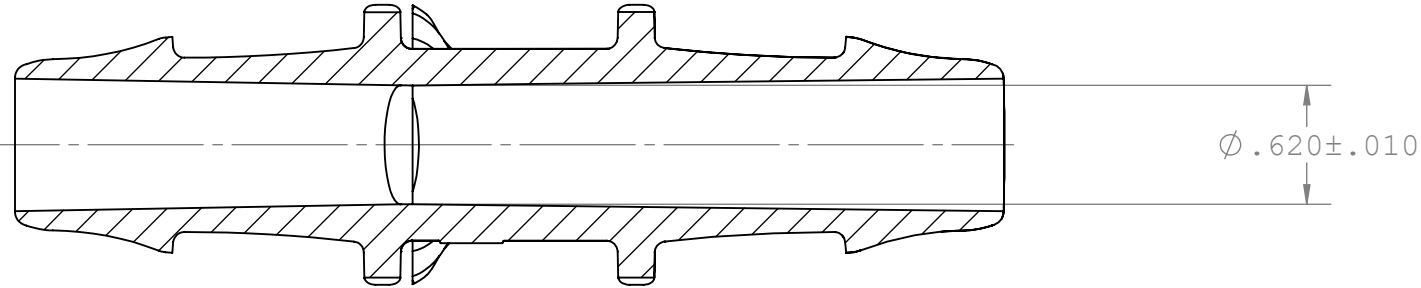


NOTES: FOR ADDITIONAL DETAILS, PLEASE CONTACT VP CUSTOMER SERVICE
DIMENSIONS MARKED ARE CONTROL DIMENSIONS

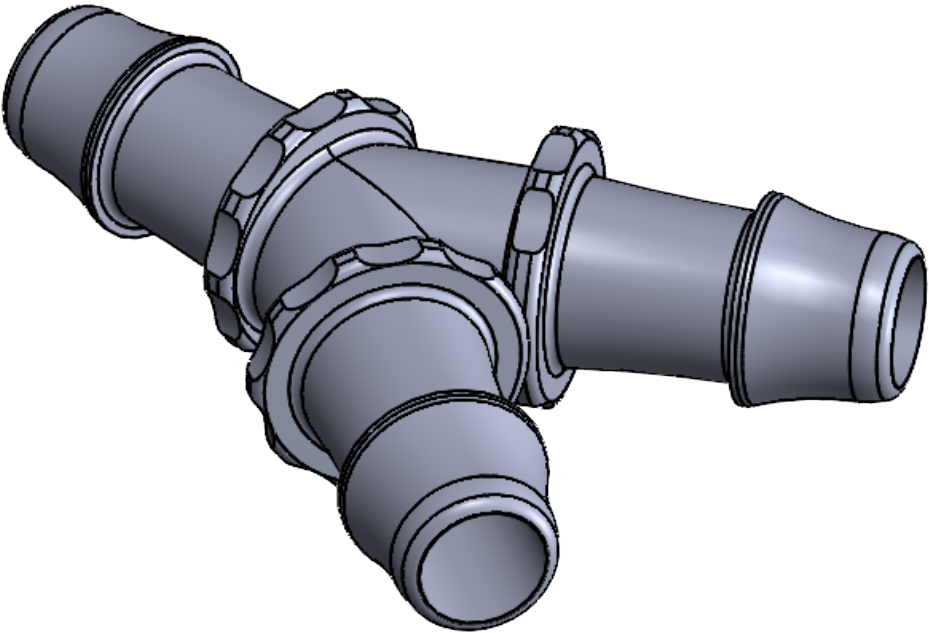


3X INSTRUMENT QUALITY PART. NO
PARTING LINE PERMITTED ON
THIS CONICAL SURFACE



SECTION A-A

REVISIONS			
REV.	DESCRIPTION	DATE	APPROVED
A	INITIAL RELEASE	02-07-03	
B	CO 046 Drafting Update	08-22-06	Rick C.
C	ECO-1335703	03-01-22	FJL



UNLESS OTHERWISE SPECIFIED DIMENSIONS ARE IN INCHES TOLERANCES ARE: FRACTIONS DECIMAL ANGULAR ± .XX ±.01 ± 1° .XXX ±.005 .XXXX ±.001 DO NOT SCALE DRAWING		VALUE PLASTICS, INC						
		PART NUMBER: Y110						
		DESCRIPTION: Y Connector with 500 Series Barbs, 1" (25.5 mm) ID Tubing						
DRAWN BY: Frank Lombardi		DATE: 4/1/2022		SIZE: B	SCALE: NTS	VER: 	DWG. NO. 1008945	REV C
MANAGER: Rick Cairns				© 2014 VALUE PLASTICS, INC				SHEET: 1 OF 1

FOR REFERENCE ONLY