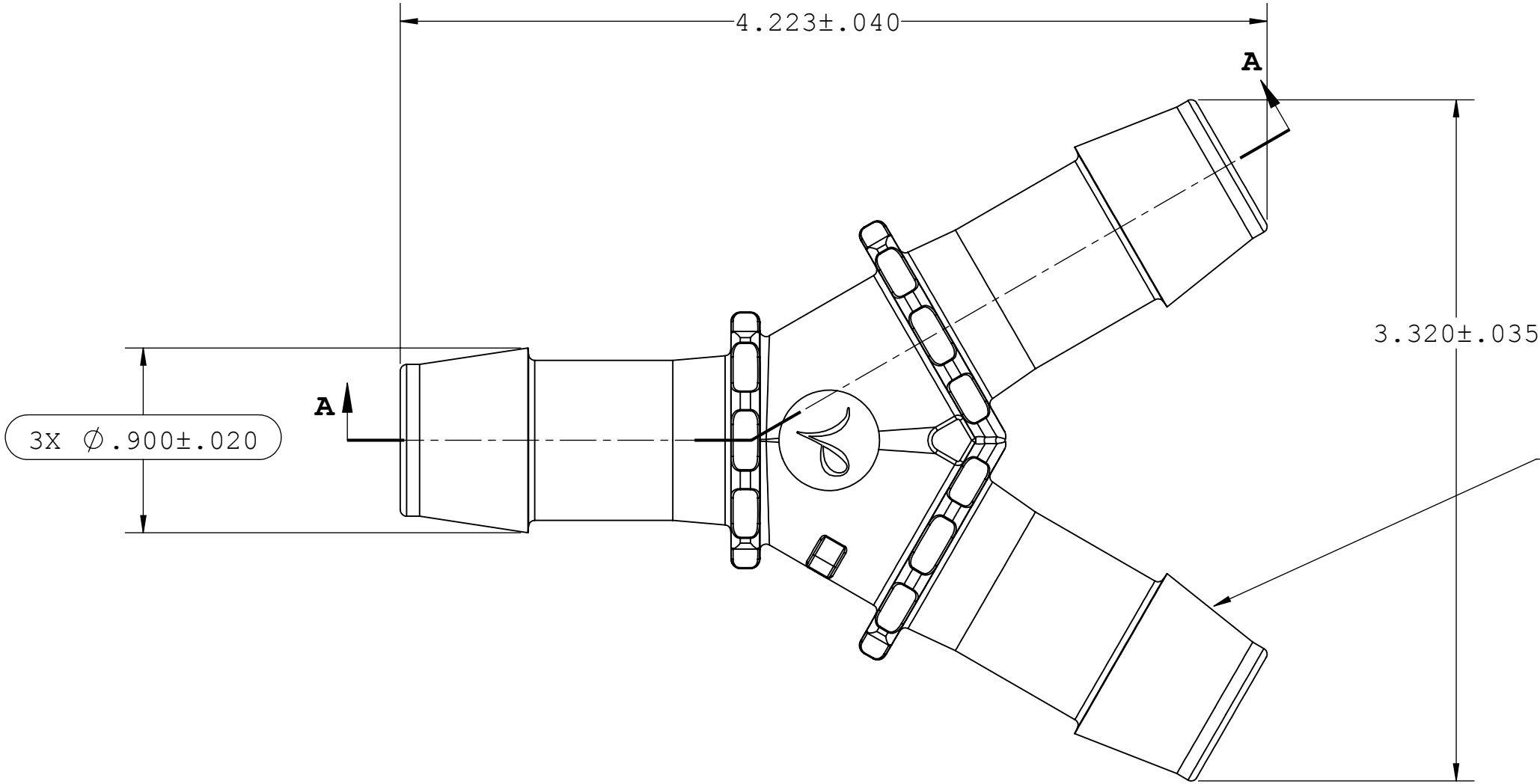
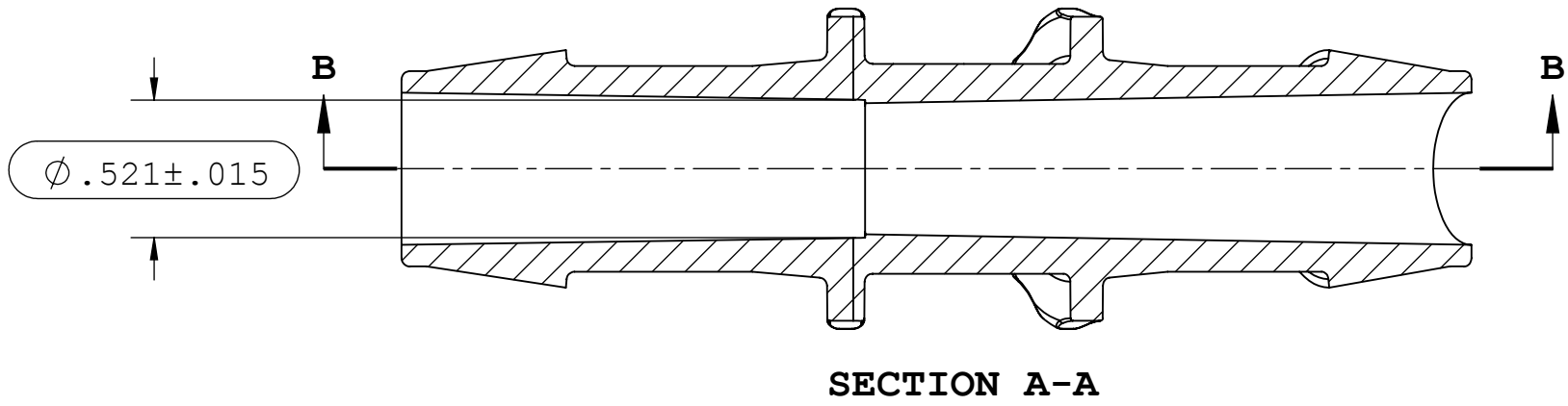
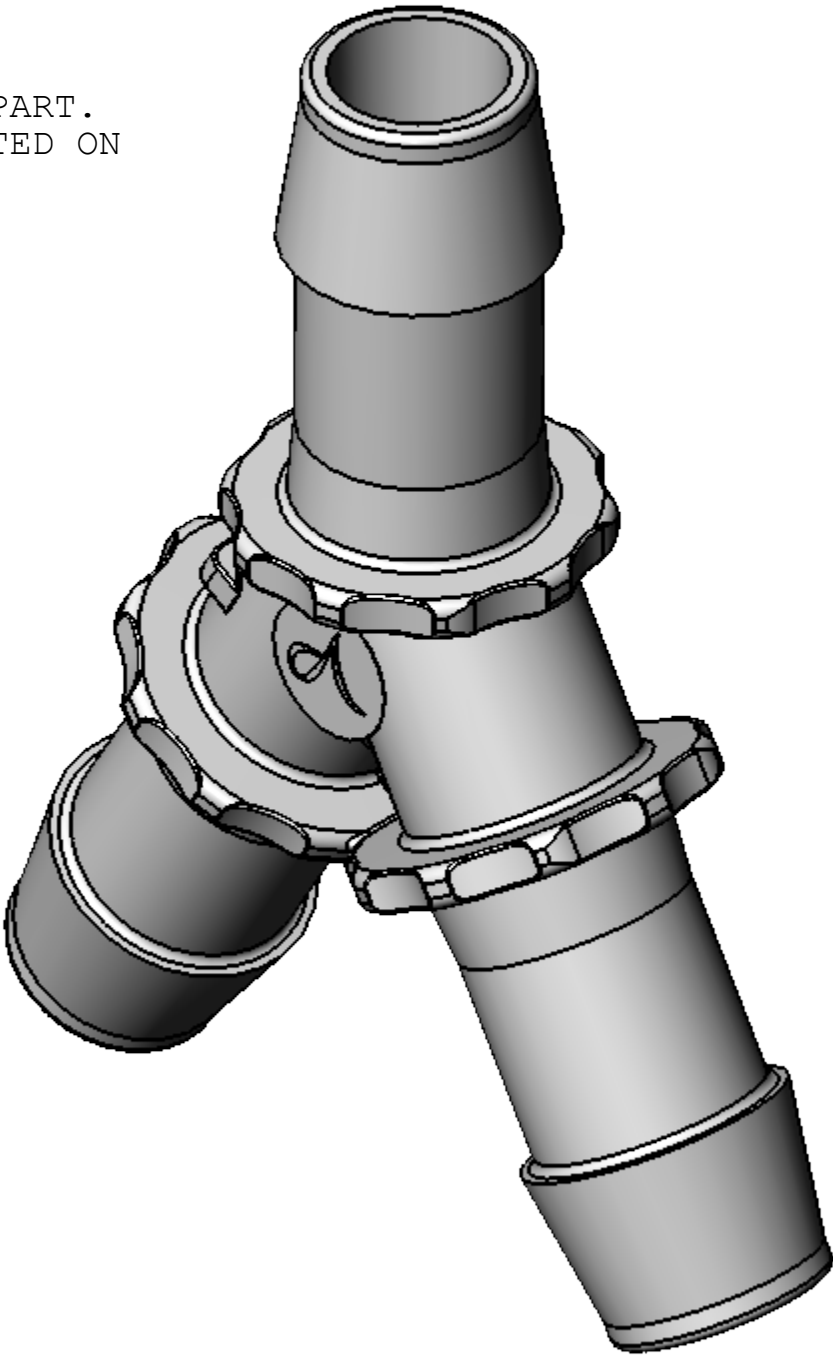


NOTES: FOR ADDITIONAL DETAILS, PLEASE CONTACT VP NEW CUSTOMER SERVICE
DIMENSIONS MARKED ARE CONTROL DIMENSIONS

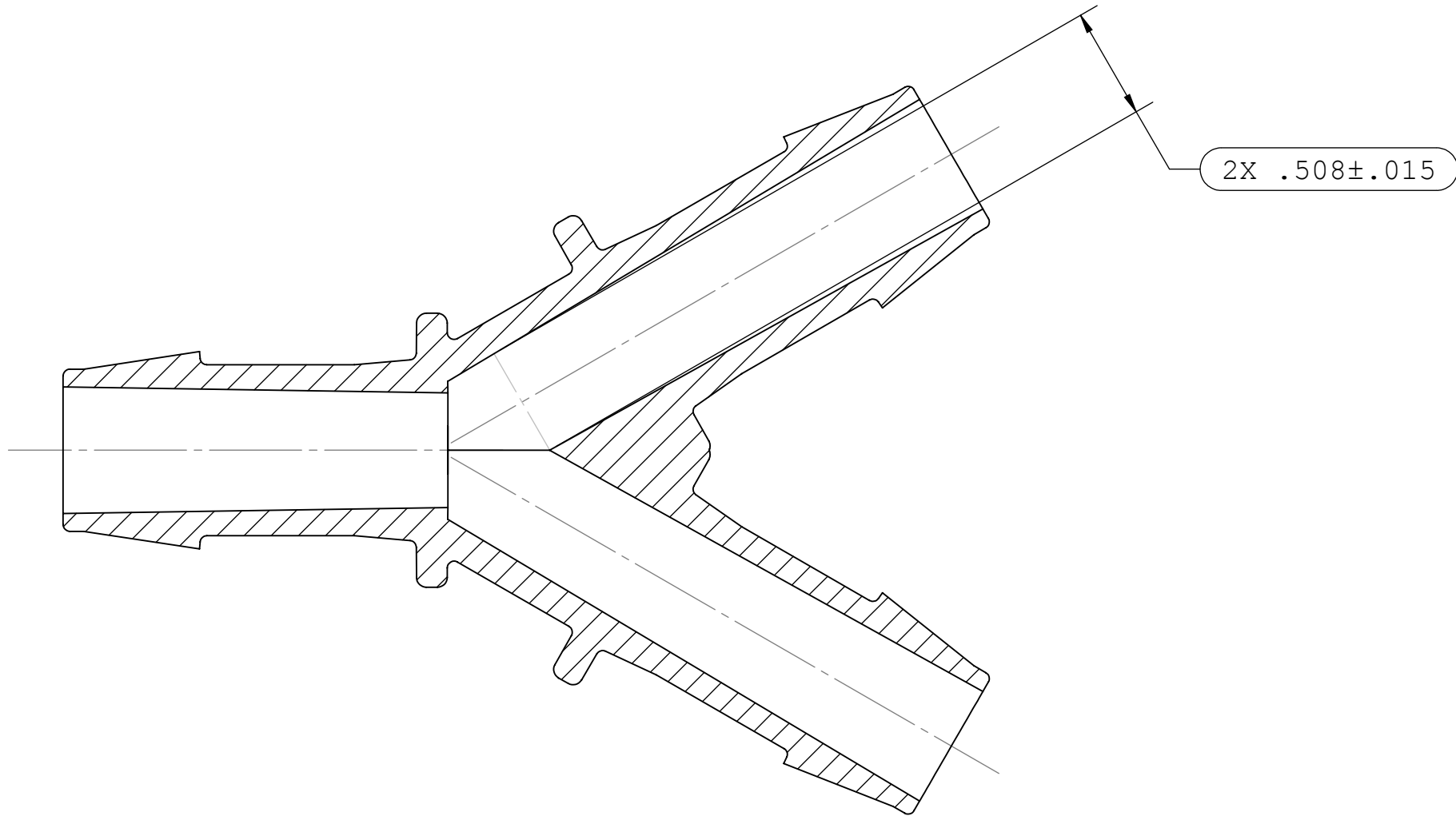
REVISIONS			
REV.	DESCRIPTION	DATE	APPROVED
A	RELEASE FOR PRODUCTION	9/9/14	H.L
B	ECO 366	08-28-17	FJL



3X INSTRUMENT QUALITY PART.
NO PARTING LINE PERMITTED ON
THIS CONICAL SURFACE.



SECTION A-A



SECTION B-B

UNLESS OTHERWISE SPECIFIED DIMENSIONS ARE IN INCHES TOLERANCES ARE: FRACTIONS DECIMALS ANGULAR ± .XX ±.01 ±1° .XXX ±.005 .XXXX ±.001 DO NOT SCALE DRAWING		VALUE PLASTICS, INC			
		PART NUMBER: Y6100			
		DESCRIPTION: Y Connector with 600 Series Barbs, 3/4" (19mm) ID Tubing			
DRAWN BY: Jonthan Mayer	DATE: 9/1/2017	SIZE: C	SCALE: NTS	DRAWING NUMBER: 1030175	REV B
ENG MGR: Ravi Narayanan		© 2014 VALUE PLASTICS, INC			SHEET: SHEET 1 OF 1

FOR REFERENCE ONLY